



## Colorado Nonfarm Payroll Jobs Estimates - 3rd Quarter 2020

<b>Statewide by Industry Sector, in Thousands</b> <i>Seasonally Adjusted</i>	<i>Expected revisions based on Q3 2020 QCEW</i>			<i>Forecast based on Q3 2020 QCEW</i>			<i>Prior year official series - Benchmarked to QCEW</i>				<i>Over the Year Change</i>			
											<i>Nonfarm Payroll Jobs</i>		<i>Growth Rate</i>	
	Jul-20	Aug-20	Sep-20	Oct-20	Nov-20	Dec-20	Jul-19	Aug-19	Sep-19	Dec-19	Sep-20	Dec-20	Sep-20	Dec-20
Modified Education & Health Services <sup>2 &amp; 3</sup>	333.6	336.1	338.7	340.4	336.9	338.0				349.8	-9.5	-11.8	-2.7%	-3.4%
Education & Health Services <sup>1</sup>	331.0	337.7	338.3	340.0	336.5	337.6	347.0	348.1	348.2	354.3	-9.9	-16.7	-2.8%	-4.7%
Expected Revision	2.6	-1.6	0.4	0.4	0.4	0.4								
Expected Percent Revision	0.8%	-0.5%	0.1%	0.1%	0.1%	0.1%								
Modified Leisure & Hospitality <sup>2 &amp; 3</sup>	260.7	268.5	276.5	281.4	275.9	239.8				347.3	-70.7	-107.5	-20.4%	-31.0%
Leisure & Hospitality <sup>1</sup>	270.9	282.7	291.6	296.5	291.0	254.9	346.6	347.2	347.2	346.4	-55.6	-91.5	-16.0%	-26.4%
Expected Revision	-10.2	-14.2	-15.1	-15.1	-15.1	-15.1								
Expected Percent Revision	-3.8%	-5.0%	-5.2%	-5.1%	-5.2%	-5.9%								
Modified Other Services <sup>2 &amp; 3</sup>	104.9	106.1	107.0	107.0	107.5	107.4				114.2	-6.5	-6.8	-5.7%	-5.9%
Other Services <sup>1</sup>	103.2	102.8	104.8	104.8	105.3	105.2	113.5	113.6	113.5	113.2	-8.7	-8.0	-7.7%	-7.1%
Expected Revision	1.7	3.3	2.2	2.2	2.2	2.2								
Expected Percent Revision	1.6%	3.2%	2.1%	2.1%	2.1%	2.1%								
Modified Government <sup>2 &amp; 3</sup>	430.2	434.7	433.6	435.0	433.8	434.1				458.0	-24.7	-23.9	-5.4%	-5.2%
Government <sup>1</sup>	423.9	434.0	428.0	429.4	428.2	428.5	457.1	457.9	458.3	459.3	-30.3	-30.8	-6.6%	-6.7%
Expected Revision	6.3	0.7	5.6	5.6	5.6	5.6								
Expected Percent Revision	1.5%	0.2%	1.3%	1.3%	1.3%	1.3%								

<sup>1</sup> Source: Official payroll jobs series produced by the U.S. Bureau of Labor Statistics and the Colorado Department of Labor and Employment.

<sup>2</sup> Modified 3rd quarter estimates produced by the Colorado Department of Labor and Employment based on 3rd quarter 2020 QCEW and an estimate of payroll jobs not covered by QCEW.

<sup>3</sup> Modified 4th quarter 2020 estimates produced by the Colorado Department of Labor and Employment based on modified 3rd quarter results and over the month changes from the official payroll jobs series.

## Colorado Nonfarm Payroll Jobs Estimates - 3rd Quarter 2020

<b>By Metropolitan Statistical Area, in Thousands Seasonally Adjusted</b>	<i>Expected revisions based on Q3 2020 QCEW</i>			<i>Forecast based on Q3 2020 QCEW</i>			<i>Prior year official series - Benchmarked to QCEW</i>				<i>Over the Year Change</i>			
											<i>Nonfarm Payroll Jobs</i>		<i>Growth Rate</i>	
	Jul-20	Aug-20	Sep-20	Oct-20	Nov-20	Dec-20	Jul-19	Aug-19	Sep-19	Dec-19	Sep-20	Dec-20	Sep-20	Dec-20
Modified Statewide Total Nonfarm Payroll Jobs <sup>2 &amp; 3</sup>	2,593.6	2,618.6	2,636.7	2,657.3	2,652.6	2,632.3				2,824.4	-162.8	-192.1	-5.8%	-6.8%
Statewide Total Nonfarm Payroll Jobs <sup>1</sup>	2,612.7	2,651.8	2,667.0	2,687.6	2,682.9	2,662.6	2,791.5	2,797.4	2,799.5	2,813.5	-132.5	-150.9	-4.7%	-5.4%
Expected Revision	-19.1	-33.2	-30.3	-30.3	-30.3	-30.3								
Expected Percent Revision	-0.7%	-1.3%	-1.1%	-1.1%	-1.1%	-1.1%								
Modified Boulder MSA Total Nonfarm Payroll Jobs <sup>2 &amp; 3</sup>	182.1	184.0	185.2	185.5	186.0	184.2				201.5	-15.2	-17.3	-7.6%	-8.6%
Boulder MSA Total Nonfarm Payroll Jobs <sup>1</sup>	183.5	186.8	185.4	185.7	186.2	184.4	199.2	200.0	200.4	200.2	-15.0	-15.8	-7.5%	-7.9%
Expected Revision	-1.4	-2.8	-0.2	-0.2	-0.2	-0.2								
Expected Percent Revision	-0.8%	-1.5%	-0.1%	-0.1%	-0.1%	-0.1%								
Modified Colorado Springs MSA Total Nonfarm Payroll Jobs <sup>2 &amp; 3</sup>	288.5	290.7	291.4	291.1	292.4	289.9				301.5	-8.9	-11.6	-3.0%	-3.9%
Colorado Springs MSA Total Nonfarm Payroll Jobs <sup>1</sup>	289.4	293.8	293.2	292.9	294.2	291.7	299.3	300.1	300.3	302.1	-7.1	-10.4	-2.4%	-3.4%
Expected Revision	-0.9	-3.1	-1.8	-1.8	-1.8	-1.8								
Expected Percent Revision	-0.3%	-1.0%	-0.6%	-0.6%	-0.6%	-0.6%								
Modified Denver MSA Total Nonfarm Payroll Jobs <sup>2 &amp; 3</sup>	1,424.9	1,433.9	1,448.3	1,459.3	1,459.0	1,447.0				1,547.9	-97.3	-100.8	-6.3%	-6.5%
Denver MSA Total Nonfarm Payroll Jobs <sup>1</sup>	1,454.2	1,474.0	1,488.4	1,499.4	1,499.1	1,487.1	1,539.5	1,542.5	1,545.6	1,556.0	-57.2	-68.9	-3.7%	-4.4%
Expected Revision	-29.3	-40.1	-40.1	-40.1	-40.1	-40.1								
Expected Percent Revision	-2.0%	-2.7%	-2.7%	-2.7%	-2.7%	-2.7%								
Modified Fort Collins MSA Total Nonfarm Payroll Jobs <sup>2 &amp; 3</sup>	161.9	164.8	164.9	166.9	166.7	164.5				175.5	-9.8	-11.0	-5.6%	-6.3%
Fort Collins MSA Total Nonfarm Payroll Jobs <sup>1</sup>	161.4	163.2	164.7	166.7	166.5	164.3	174.0	173.4	174.7	177.9	-10.0	-13.6	-5.7%	-7.6%
Expected Revision	0.5	1.6	0.2	0.2	0.2	0.2								
Expected Percent Revision	0.3%	1.0%	0.1%	0.1%	0.1%	0.1%								
Modified Grand Junction MSA Total Nonfarm Payroll Jobs <sup>2 &amp; 3</sup>	60.6	61.7	61.8	62.2	61.8	61.9				65.1	-3.2	-3.2	-5.0%	-5.0%
Grand Junction MSA Total Nonfarm Payroll Jobs <sup>1</sup>	63.4	64.6	64.9	65.3	64.9	65.0	65.3	65.1	65.0	64.8	-0.1	0.2	-0.2%	0.3%
Expected Revision	-2.8	-2.9	-3.1	-3.1	-3.1	-3.1								
Expected Percent Revision	-4.4%	-4.4%	-4.8%	-4.8%	-4.8%	-4.8%								
Modified Greeley MSA Total Nonfarm Payroll Jobs <sup>2 &amp; 3</sup>	102.7	103.2	103.1	103.3	104.1	105.7				113.9	-11.3	-8.2	-9.9%	-7.2%
Greeley MSA Total Nonfarm Payroll Jobs <sup>1</sup>	106.9	107.4	106.9	107.1	107.9	109.5	114.1	114.2	114.4	114.6	-7.5	-5.1	-6.6%	-4.5%
Expected Revision	-4.2	-4.2	-3.8	-3.8	-3.8	-3.8								
Expected Percent Revision	-3.9%	-3.9%	-3.6%	-3.6%	-3.5%	-3.5%								
Modified Pueblo MSA Total Nonfarm Payroll Jobs <sup>2 &amp; 3</sup>	61.8	62.2	62.1	62.1	62.6	61.8				64.0	-1.8	-2.2	-2.8%	-3.5%
Pueblo MSA Total Nonfarm Payroll Jobs <sup>1</sup>	61.4	62.0	61.6	61.6	62.1	61.3	63.9	64.2	63.9	63.7	-2.3	-2.4	-3.6%	-3.8%
Expected Revision	0.4	0.2	0.5	0.5	0.5	0.5								
Expected Percent Revision	0.6%	0.3%	0.8%	0.8%	0.8%	0.8%								

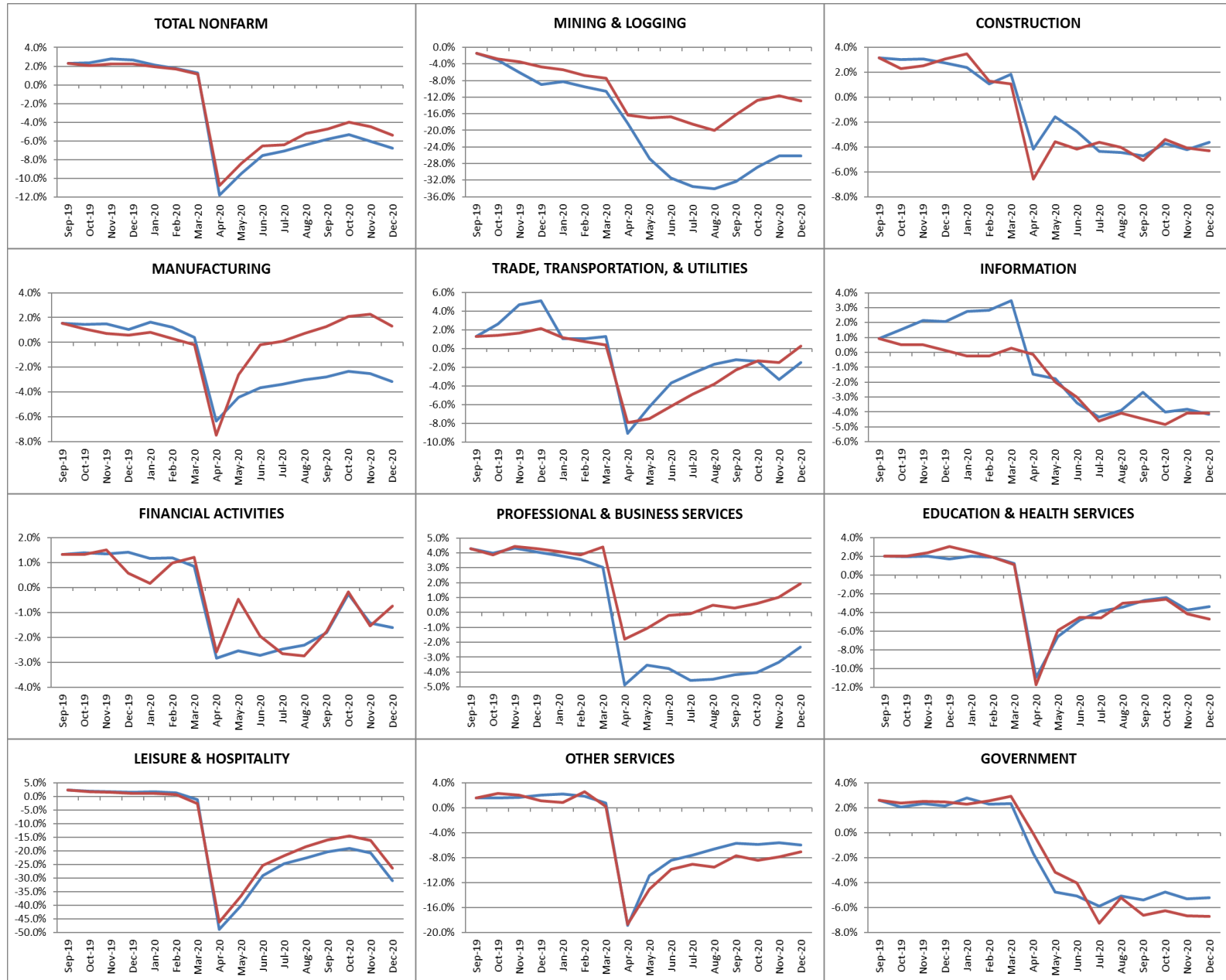
<sup>1</sup> Source: Official payroll jobs series produced by the U.S. Bureau of Labor Statistics and the Colorado Department of Labor and Employment.

<sup>2</sup> Modified 3rd quarter estimates produced by the Colorado Department of Labor and Employment based on 3rd quarter 2020 QCEW and an estimate of payroll jobs not covered by QCEW.

<sup>3</sup> Modified 4th quarter 2020 estimates produced by the Colorado Department of Labor and Employment based on modified 3rd quarter results and over the month changes from the official payroll jobs series.

# Colorado Nonfarm Payroll Jobs Estimates – Over the Year Growth Rates by Industry Sector

Official<sup>1</sup> Payroll Jobs = Red Line / Modified<sup>2</sup> & <sup>3</sup> Payroll Jobs = Blue Line



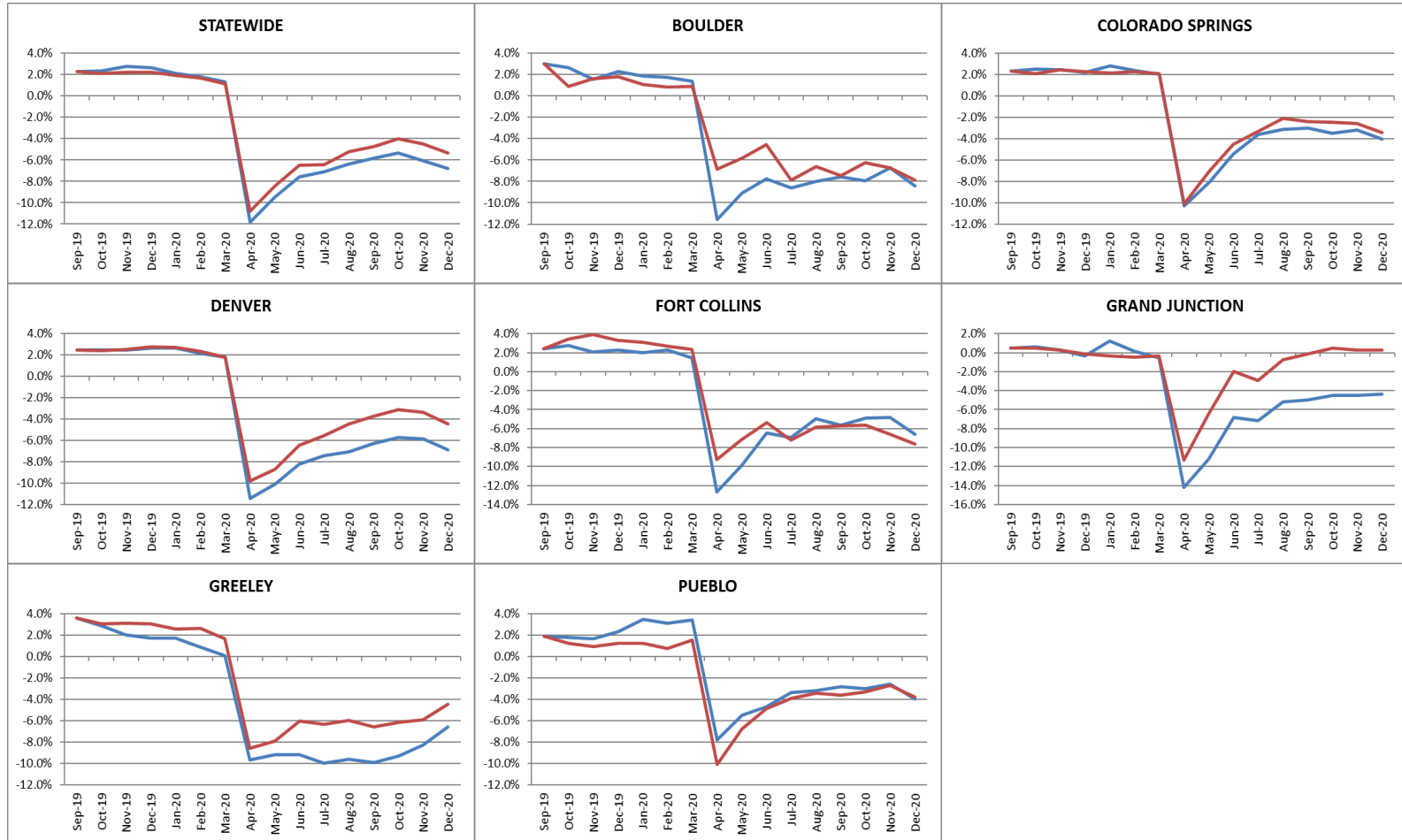
<sup>1</sup> Source: Official payroll jobs series produced by the U.S. Bureau of Labor Statistics and the Colorado Department of Labor and Employment; September 2019 is previously benchmarked data.

<sup>2</sup> Modified Oct 2019 – Sep 2020 estimates produced by the Colorado Department of Labor and Employment based on Oct 2019 – Sep 2020 QCEW and an estimate of payroll jobs not covered by QCEW.

<sup>3</sup> Modified 4th quarter 2020 estimates produced by the Colorado Department of Labor and Employment based on modified 3rd quarter results and over the month changes from the official payroll jobs series.

# Colorado Nonfarm Payroll Jobs Estimates – Over the Year Growth Rates by Metropolitan Statistical Area

Official<sup>1</sup> Payroll Jobs = Red Line / Modified<sup>2</sup> & <sup>3</sup> Payroll Jobs = Blue Line



<sup>1</sup> Source: Official payroll jobs series produced by the U.S. Bureau of Labor Statistics and the Colorado Department of Labor and Employment; September 2019 is previously benchmarked data.

<sup>2</sup> Modified Oct 2019 – Sep 2020 estimates produced by the Colorado Department of Labor and Employment based on Oct 2019 – Sep 2020 QCEW and an estimate of payroll jobs not covered by QCEW.

<sup>3</sup> Modified 4th quarter 2020 estimates produced by the Colorado Department of Labor and Employment based on modified 3rd quarter results and over the month changes from the official payroll jobs series.