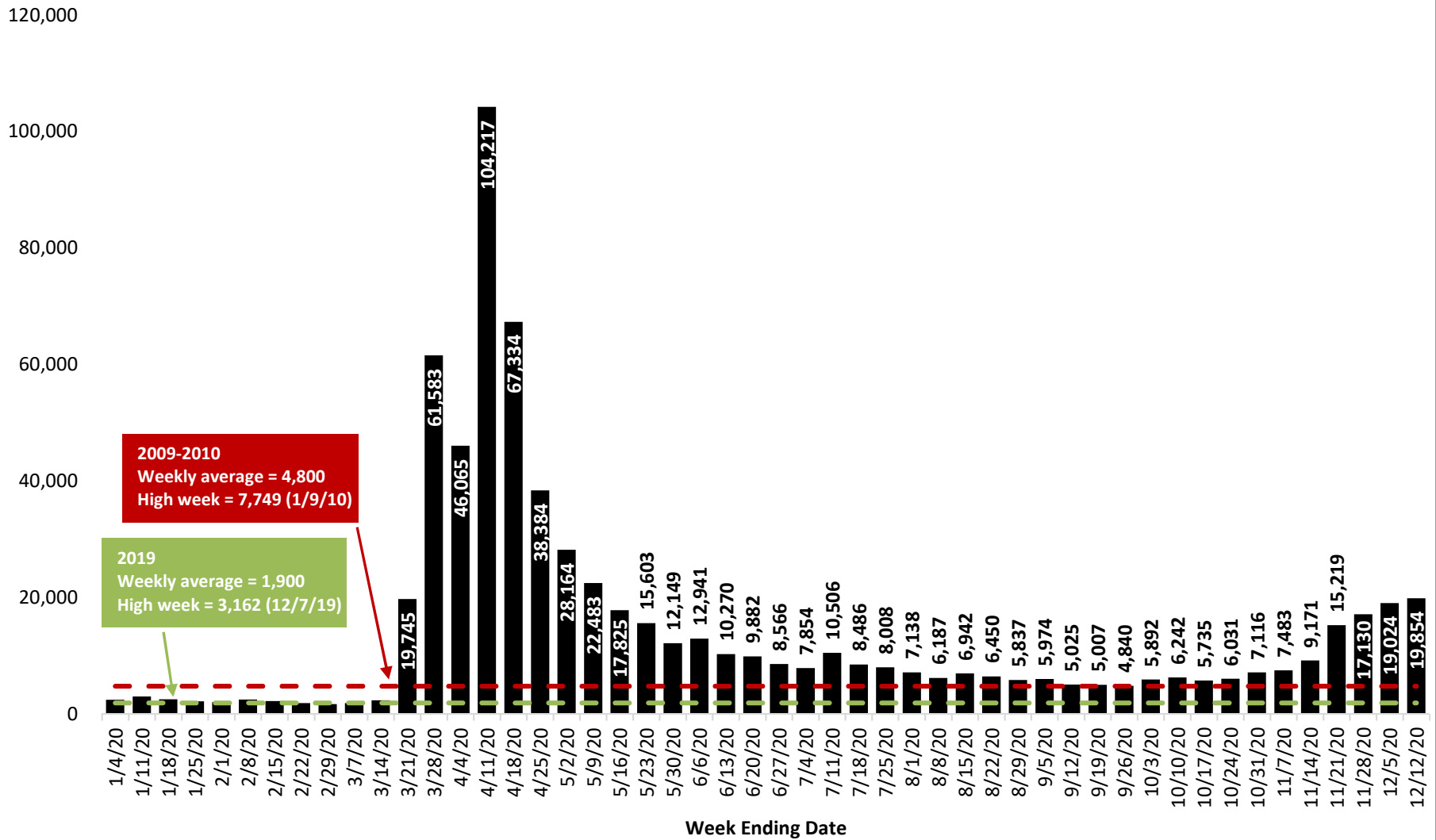


COLORADO UNEMPLOYMENT INSURANCE CHARTS

THROUGH WEEK ENDING DECEMBER 12, 2020

COLORADO DEPARTMENT OF LABOR AND EMPLOYMENT

Colorado Regular Unemployment Insurance Initial Claims

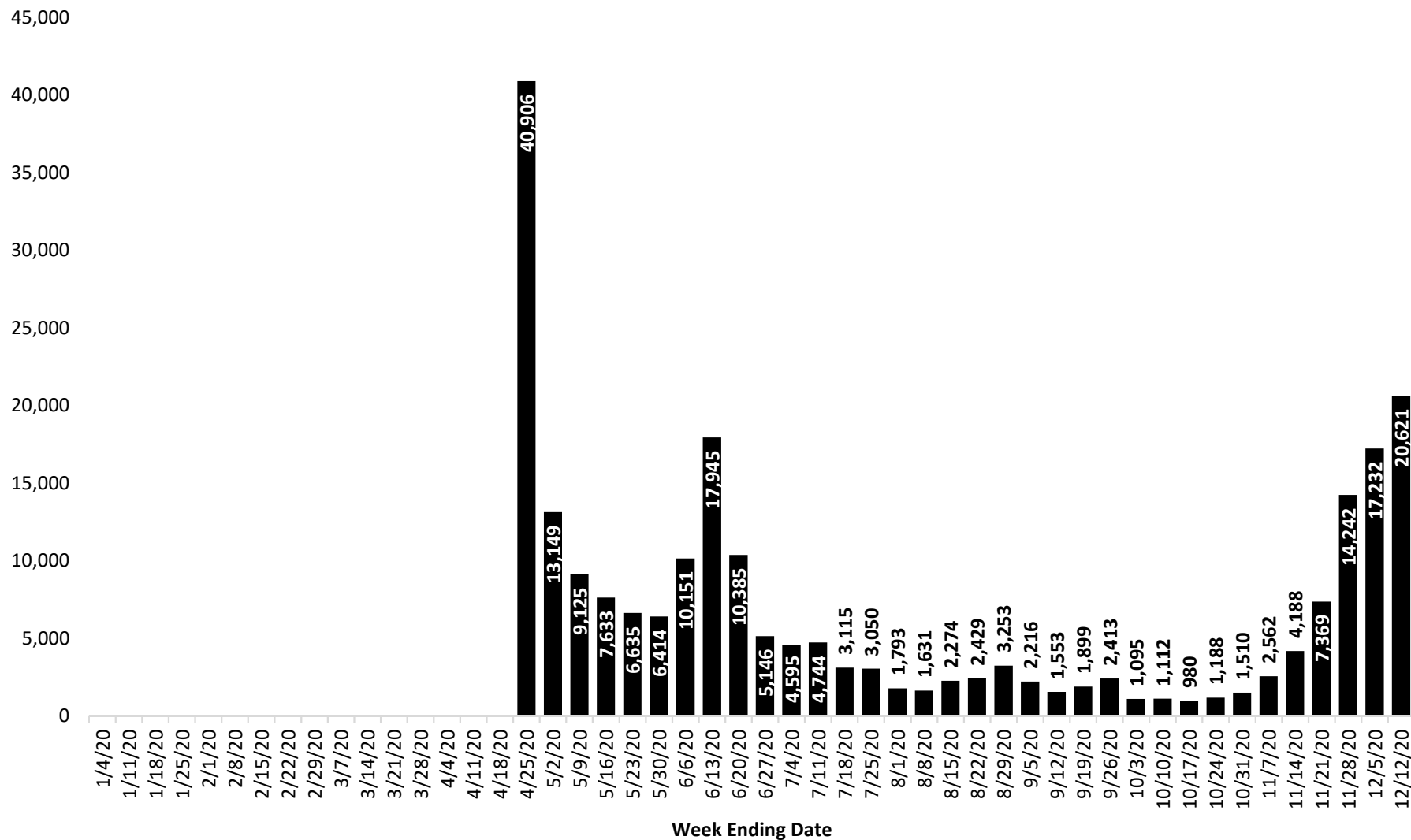


Source: Colorado Department of Labor and Employment; Employment and Training Administration

*Initial claim: a claim filed to establish or reestablish benefit eligibility. Initial claims are considered a reliable leading indicator of economic activity.

**Regular UI claims only reflected in this chart, does not include initial claims which stemmed from extended benefit programs during the Great Recession. Also excludes UCFE (federal) and UCX (ex-servicemember) claims.

Colorado Pandemic Unemployment Assistance (PUA) Initial Claims



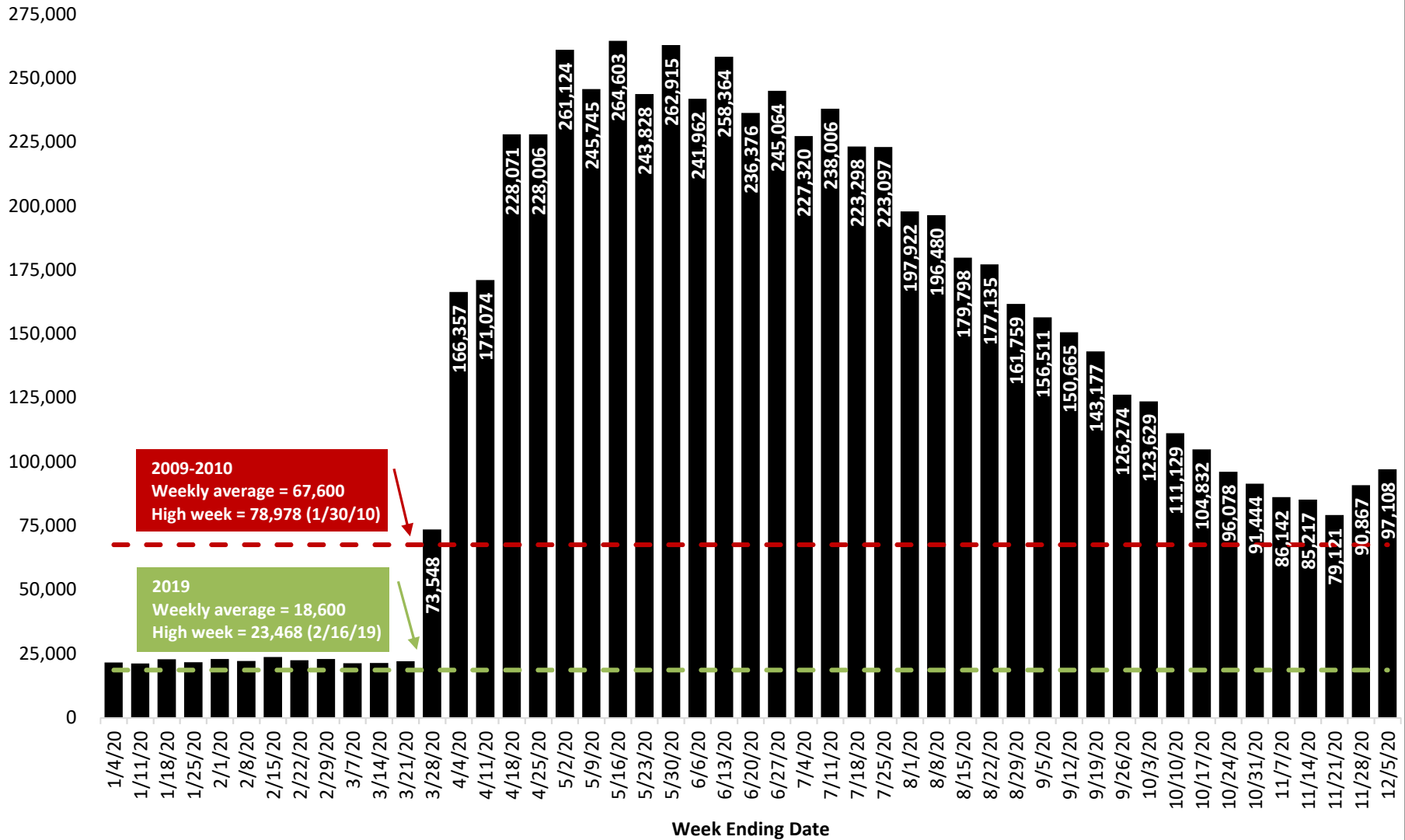
Source: Colorado Department of Labor and Employment; Employment and Training Administration

***Initial claim:** a claim filed to establish or reestablish benefit eligibility. Initial claims are considered a reliable leading indicator of economic activity.

**Pandemic Unemployment Assistance claims only reflected in this chart; program started in Colorado week ending April 25, 2020.

Claims totals for weeks ending 10/3 to 11/7 revised down from previously reported.

Colorado Regular Unemployment Insurance Continued Weeks Claimed



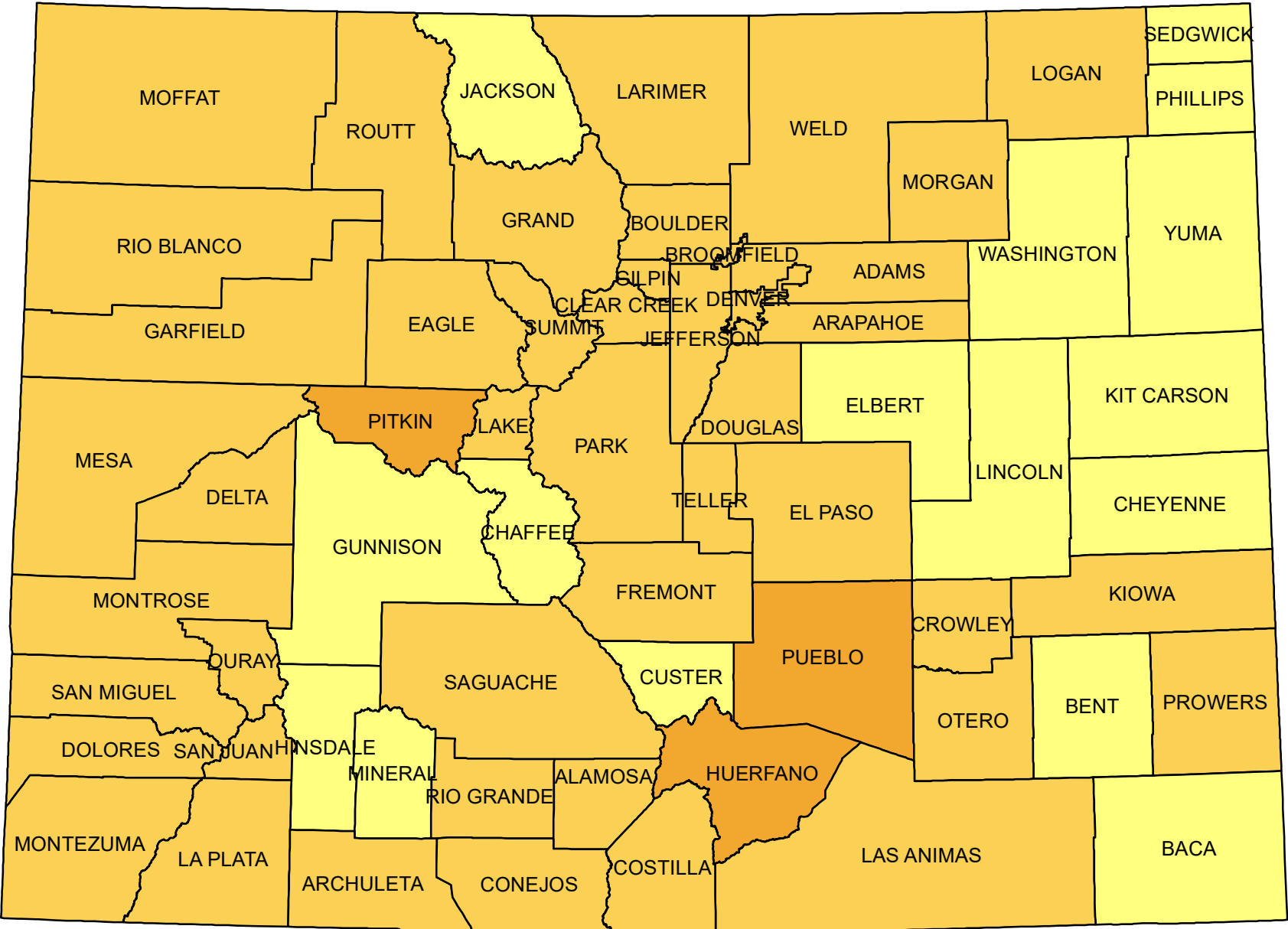
Source: Colorado Department of Labor and Employment; Employment and Training Administration

*Continued weeks claimed: a claim filed to request payment for a given week after eligibility has been established. Weeks claimed provide information as to current labor market conditions.

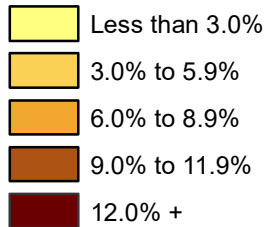
**Regular UI claims only reflected in this chart, does not include continued claims which stemmed from extended benefit programs during the Great Recession. Also excludes UCFE (federal) and UCX (ex-servicemember) claims.

Continued Weeks Claimed as Share of 2019 Annual Average Employment

*** For Week Ending November 28, 2020 ***

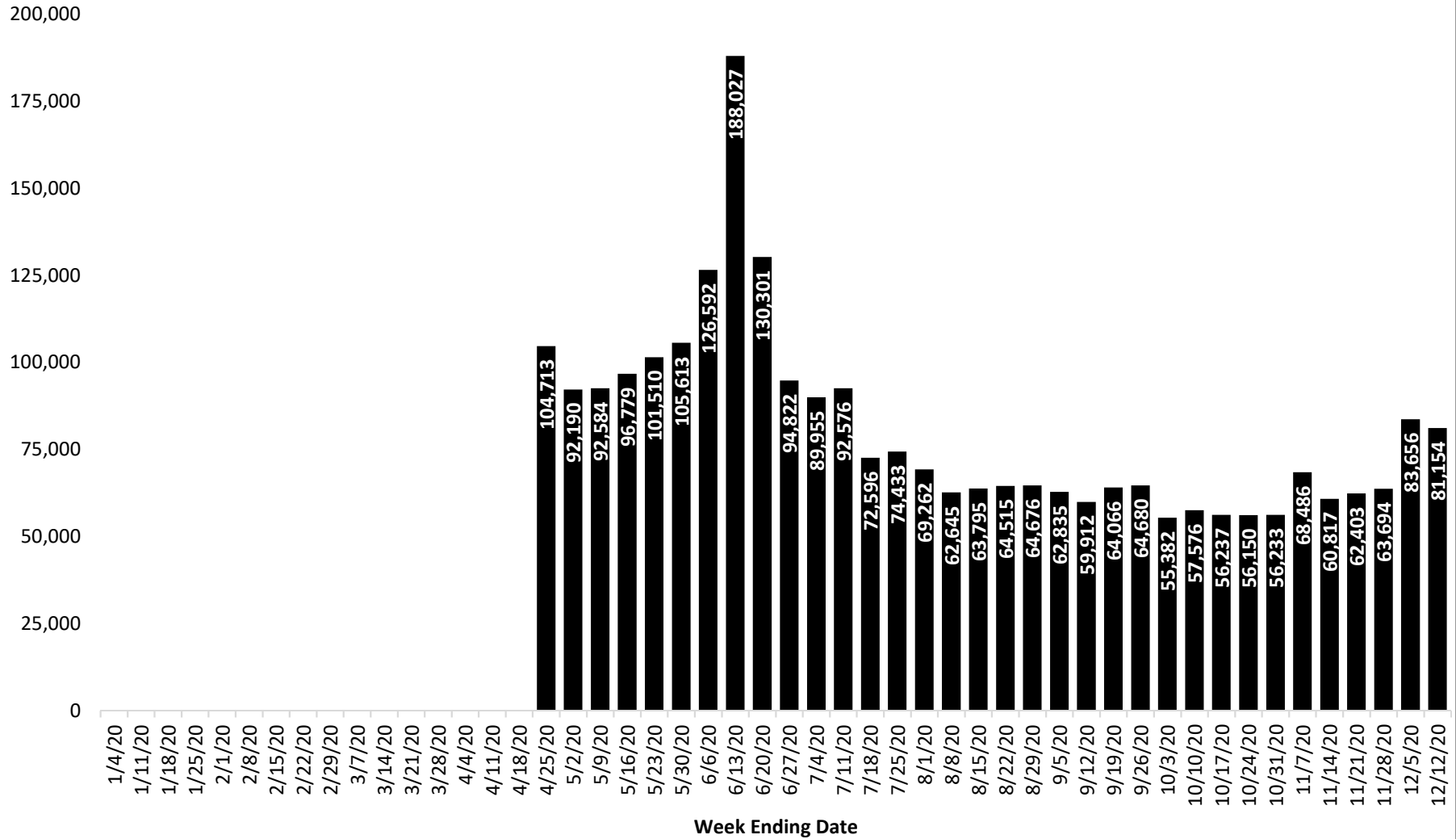


% of Employment



Source: Colorado Department of Labor and Employment; Bureau of Labor Statistics
 Note: County-level data most recent available.
 Includes continued weeks claimed for regular UI, PEUC, and SEB.

Colorado Pandemic Unemployment Assistance (PUA) Continued Weeks Claimed



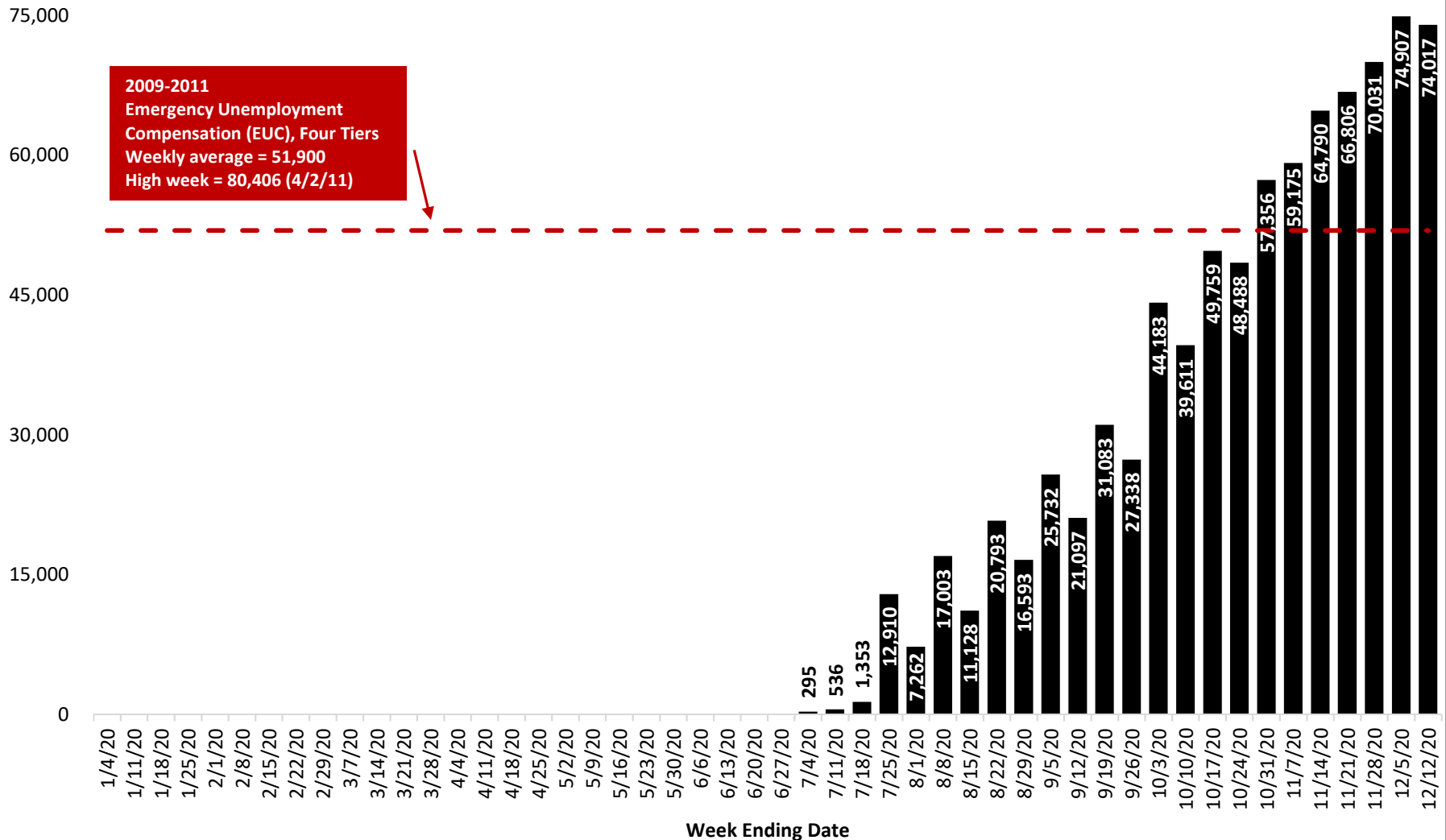
Source: Colorado Department of Labor and Employment; Employment and Training Administration

***Continued weeks claimed:** a claim filed to request payment for a given week after eligibility has been established. Weeks claimed provide information as to current labor market conditions.

**Pandemic Unemployment Assistance claims only reflected in this chart; program started in Colorado week ending April 25, 2020.

Claims totals for weeks ending 10/3 to 11/7 revised from previously reported.

Colorado Pandemic Emergency Unemployment Compensation (PEUC) Continued Weeks Claimed

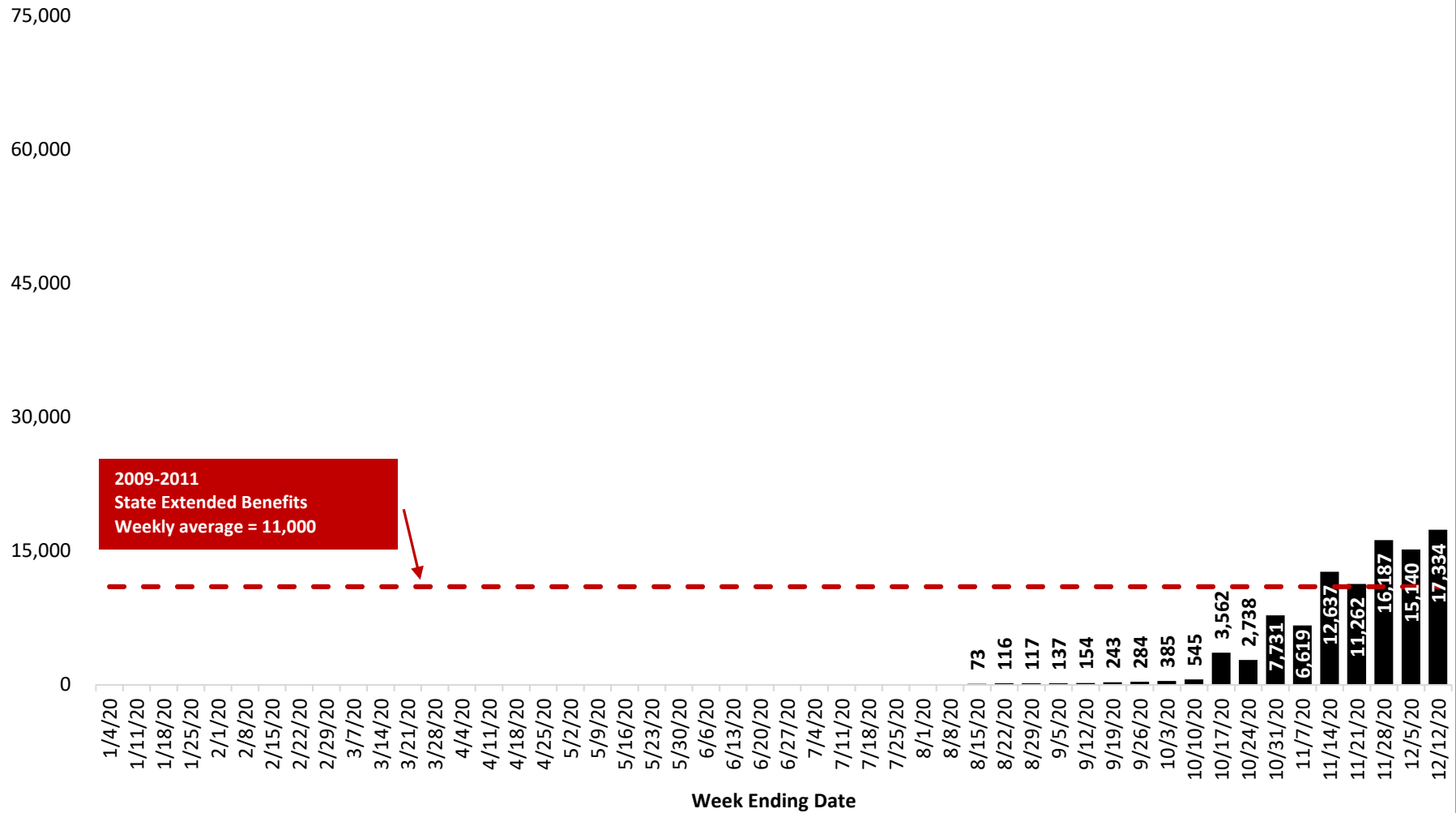


Source: Colorado Department of Labor and Employment; Employment and Training Administration

***Continued weeks claimed:** a claim filed to request payment for a given week after eligibility has been established. Weeks claimed provide information as to current labor market conditions.

**This chart shows current Pandemic Emergency Unemployment Compensation (PEUC) claims activity and compares to the 2009-11 weekly average number of continued weeks claimed from the Emergency Unemployment Compensation 2008 (EUC08) program established during the Great Recession. PEUC, as part of the CARES Act, extends unemployment benefits by an additional 13 weeks. The PEUC program became active in Colorado in early July. For more information on the EUC08 program, go to: <https://oui.doleta.gov/unemploy/euc.asp>.

Colorado State Extended Benefits (SEB) Continued Weeks Claimed



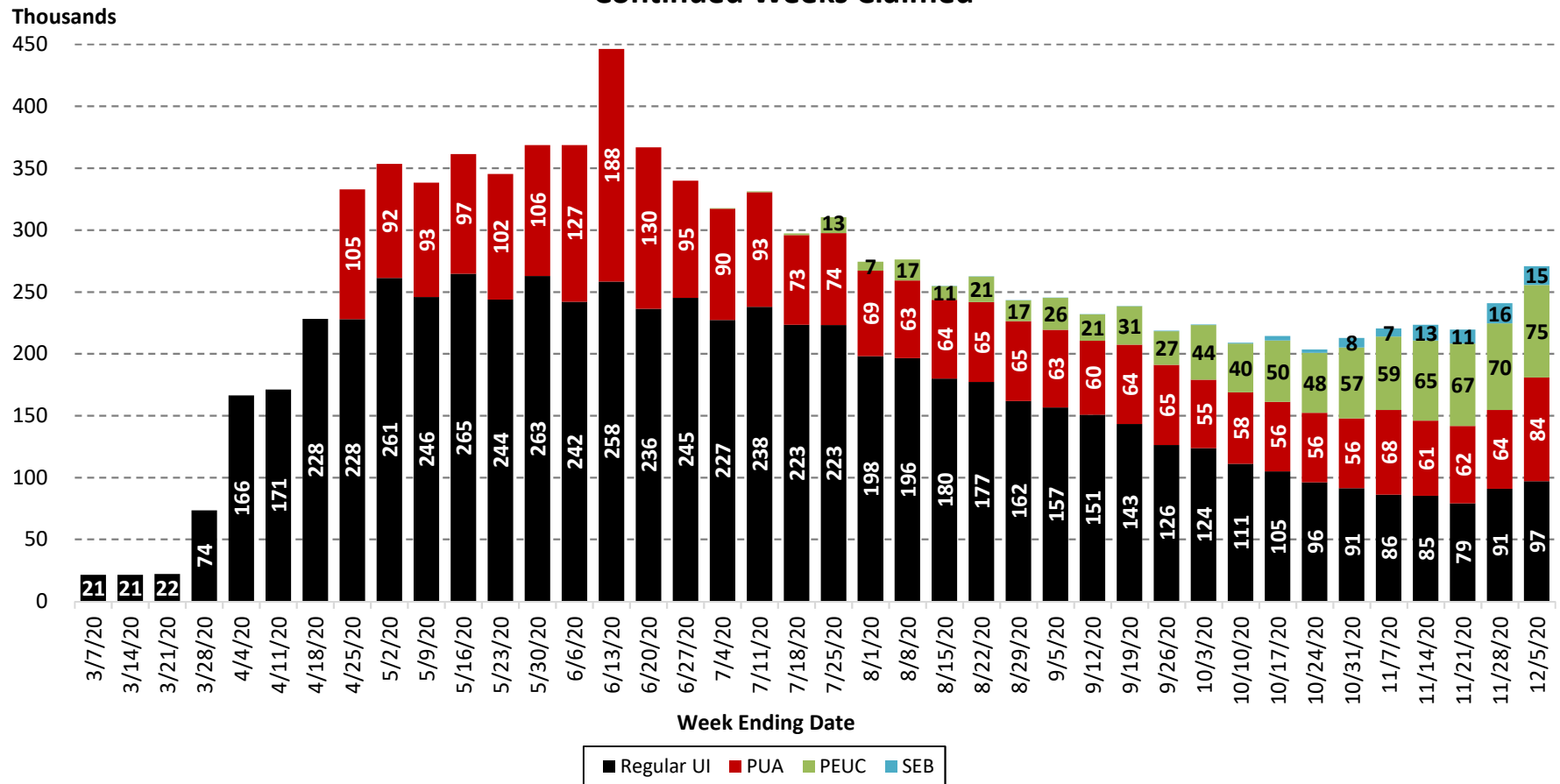
Source: Colorado Department of Labor and Employment; Employment and Training Administration

***Continued weeks claimed:** a claim filed to request payment for a given week after eligibility has been established. Weeks claimed provide information as to current labor market conditions.

**This chart shows current State Extended Benefits (SEB) claims activity and compares to the 2009-11 weekly average number of continued weeks claimed from the same program during the Great Recession. SEB extends unemployment benefits by an additional 13 weeks. The SEB program became active in Colorado in mid-August. SEB triggered off at the end of November due to the IUR falling below 5%. However, continued claims data for SEB program will still show up after November due to backdating and other reasons.

For more information on the SEB program, go to: <https://oui.doleta.gov/unemploy/extenben.asp> and <https://cdle.colorado.gov/unemployment/extended-benefits>.

Colorado Regular UI, Pandemic Unemployment Assistance (PUA), Pandemic Emergency Unemployment Compensation (PEUC), and State Extended Benefits (SEB) Continued Weeks Claimed



Source: Colorado Department of Labor and Employment; Employment and Training Administration

***Continued weeks claimed:** a claim filed to request payment for a given week after eligibility has been established. Weeks claimed provide information as to current labor market conditions.

**Regular UI, Pandemic Unemployment Assistance (PUA), and Pandemic Emergency Unemployment Compensation (PEUC) claims reflected in this chart.

PUA program started in Colorado week ending April 25, 2020. PUA claims totals for weeks ending 10/3 to 11/7 revised down from previously reported.

PEUC program became active in Colorado in early July and extends unemployment benefits by an additional 13 weeks.

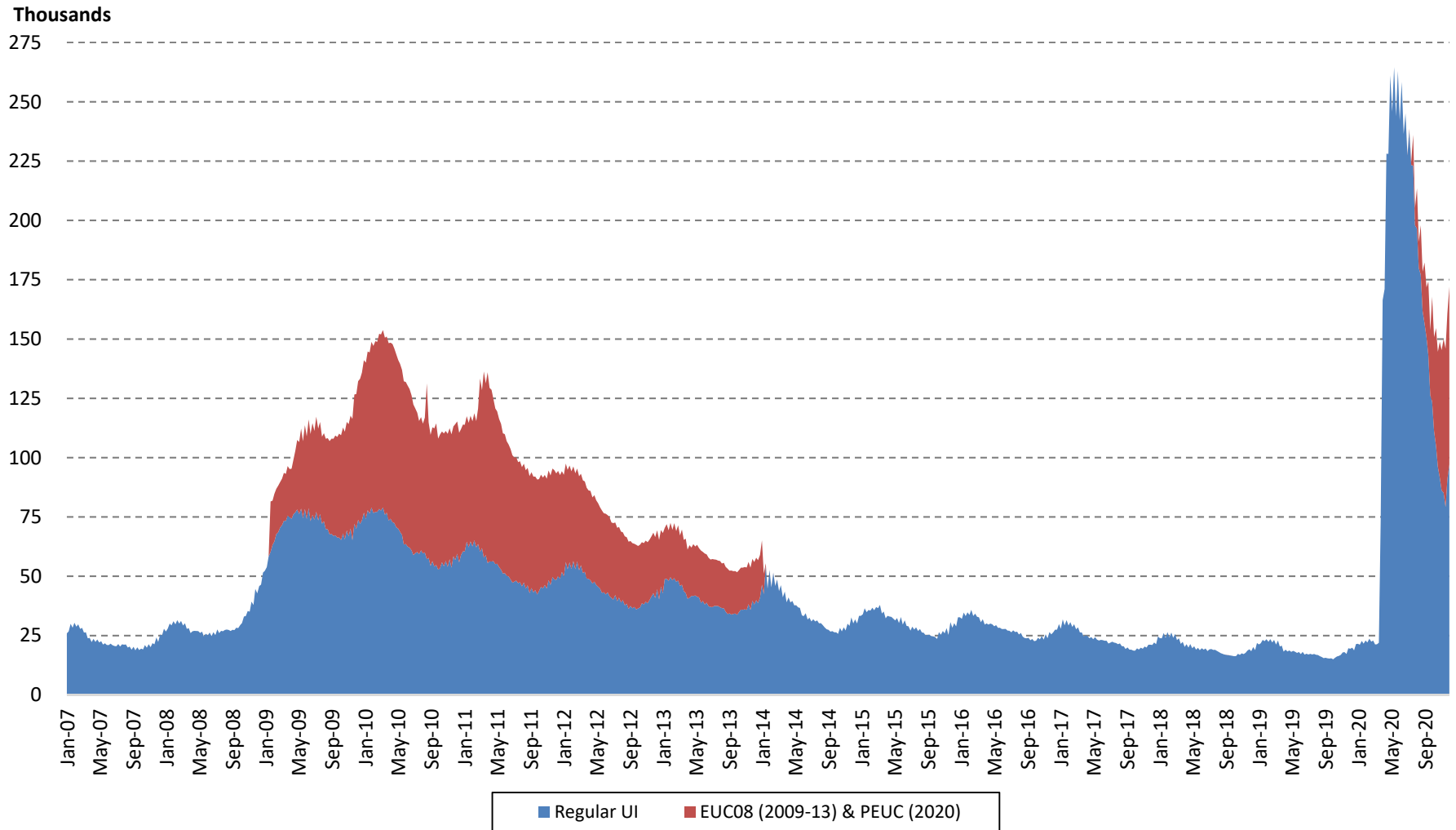
SEB program became active in Colorado in mid-August and extends unemployment benefits by an additional 13 weeks. SEB triggered off at the end of November due to the IUR falling below 5%.

However, continued claims data for the SEB program will still show up after November due to backdating and other reasons.

***Weekly average of regular UI continued weeks claimed in 2019 was 18,600; during the Great Recession (2009-10) the weekly average was 67,600.

****Weekly average of last federal extension program (Emergency Unemployment Compensation 2008) from 2009-11 was 51,900.

Combined Number of Colorado Continued Weeks Claimed for Regular UI and Federally Extended Benefit Programs (EUC08: 2009-13; PEUC: 2020)

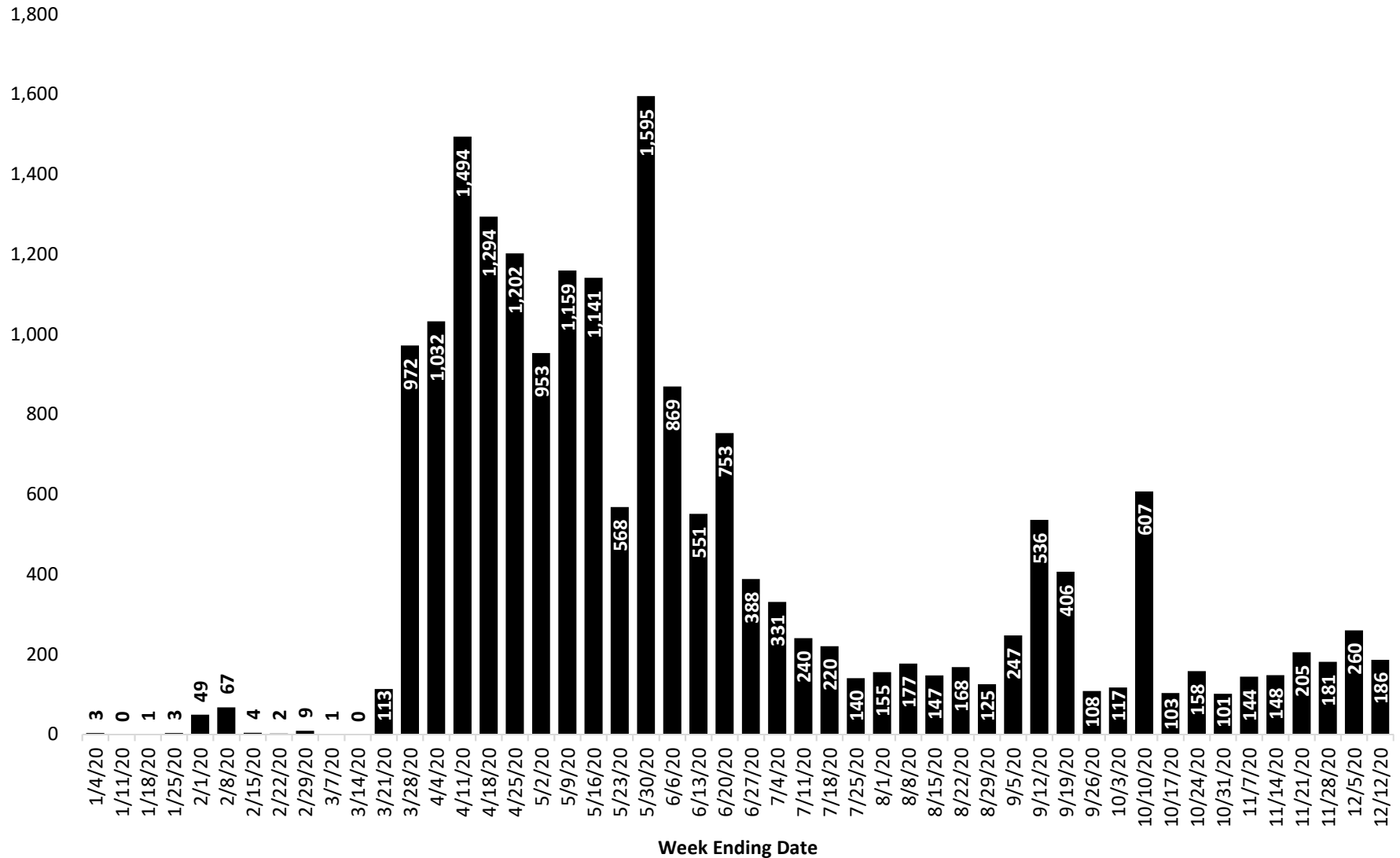


Source: Colorado Department of Labor and Employment; Employment and Training Administration

***Continued weeks claimed:** a claim filed to request payment for a given week after eligibility has been established. Weeks claimed provide information as to current labor market conditions.

**This chart shows the total number of continued weeks claimed when combining regular UI with Emergency Unemployment Compensation 2008 (EUC08) and Pandemic Emergency Unemployment Compensation (PEUC), when applicable. The EUC08 program was established during the Great Recession, for more information go to: <https://oui.doleta.gov/unemploy/euc.asp>. PEUC, as part of the CARES Act, extends unemployment benefits by an additional 13 weeks. The PEUC program became active in Colorado in early July.

Colorado Short-Time Compensation (Work-Share) Initial Claims



Source: Colorado Department of Labor and Employment; Employment and Training Administration

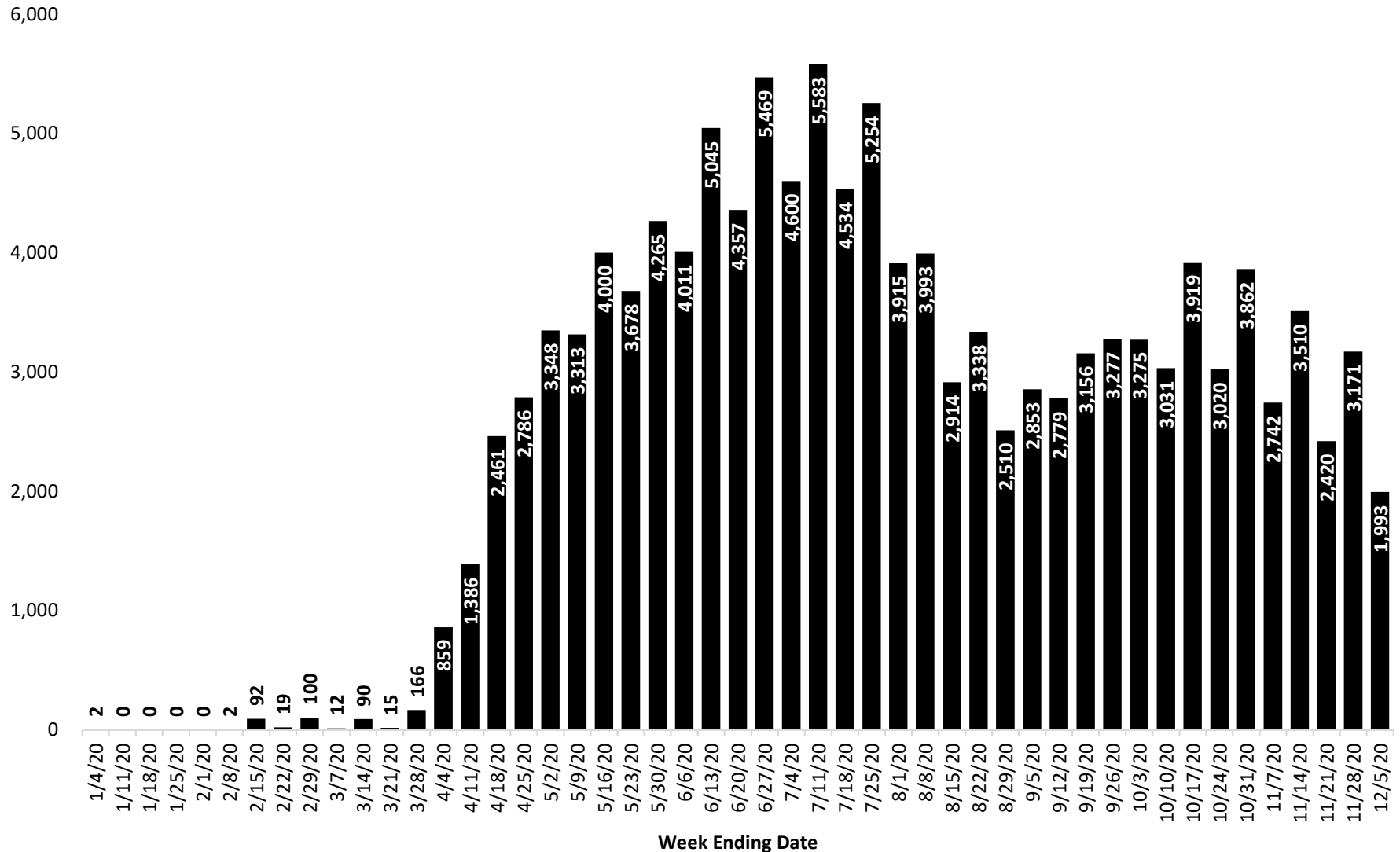
***Short-Time Compensation (STC) Equivalent Initial Claim:** this is the equivalent of the full time layoff initial claims that would have taken place if not for the STC program.

**As of November 30, 2020 there were 1,220 active work-share plans, with 864 participating employers. Prior to outbreak of COVID-19 there were 6 employers with active work-share plans.

***Combined number of Federal-State UI Extended and State UI Additional Compensation Program claims reflected in this chart.

****For more information on the STC program, go to: https://oui.doleta.gov/unemploy/docs/stc_fact_sheet.pdf and <https://www.colorado.gov/pacific/cdle/layoffassistance>.

Colorado Short-Time Compensation (Work-Share) Continued Claims



Source: Colorado Department of Labor and Employment; Employment and Training Administration

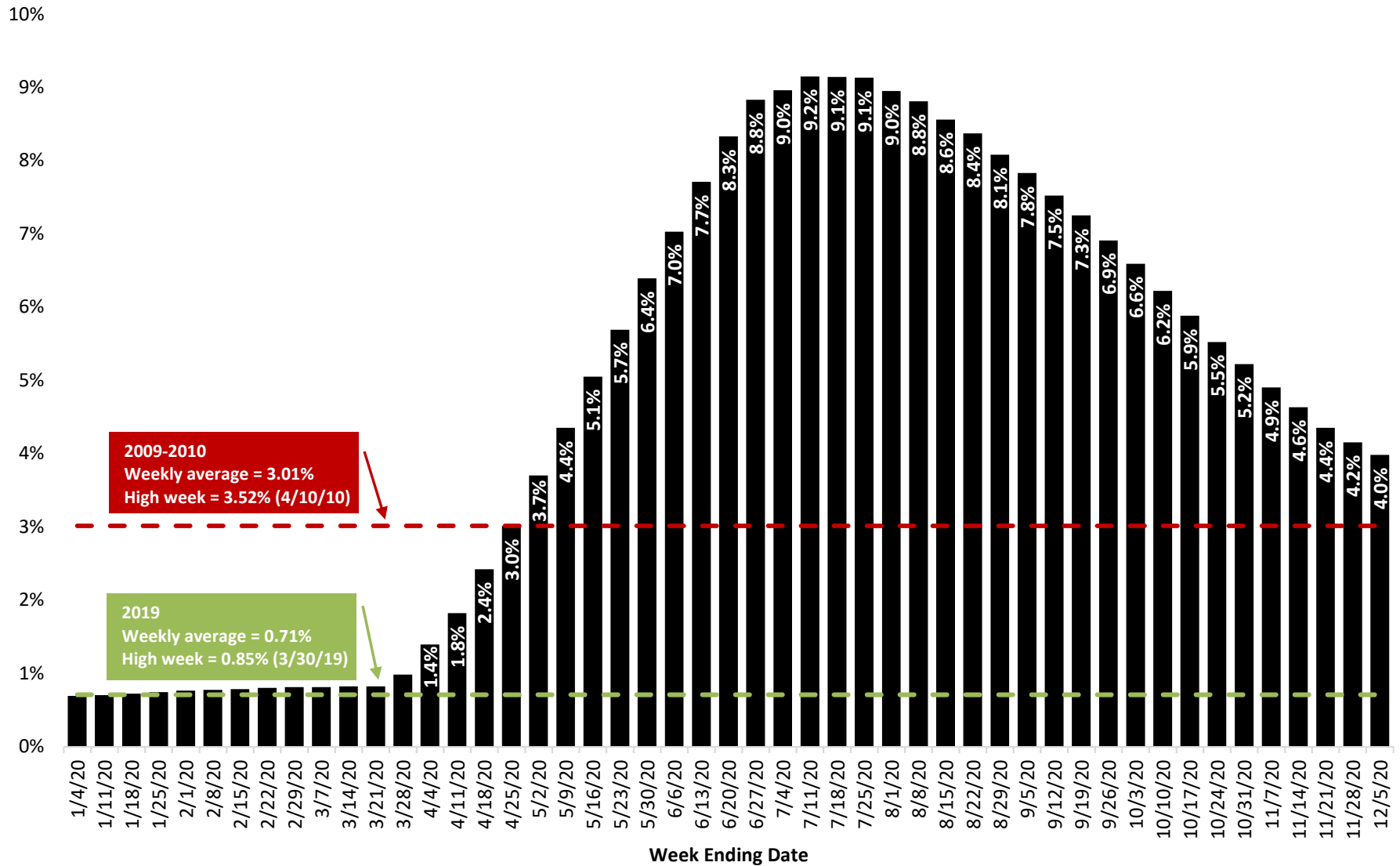
***Short-Time Compensation (STC) Equivalent Continued Weeks Claimed:** this is based on the proportion of the week being claimed.

**As of November 30, 2020 there were 1,220 active work-share plans, with 864 participating employers. Prior to outbreak of COVID-19 there were 6 employers with active work-share plans.

***Combined number of Federal-State UI Extended and State UI Additional Compensation Program claims reflected in this chart.

****For more information on the STC program, go to: https://oui.doleta.gov/unemploy/docs/stc_fact_sheet.pdf and <https://www.colorado.gov/pacific/cdle/layoffassistance>.

Colorado Insured Unemployment Rate

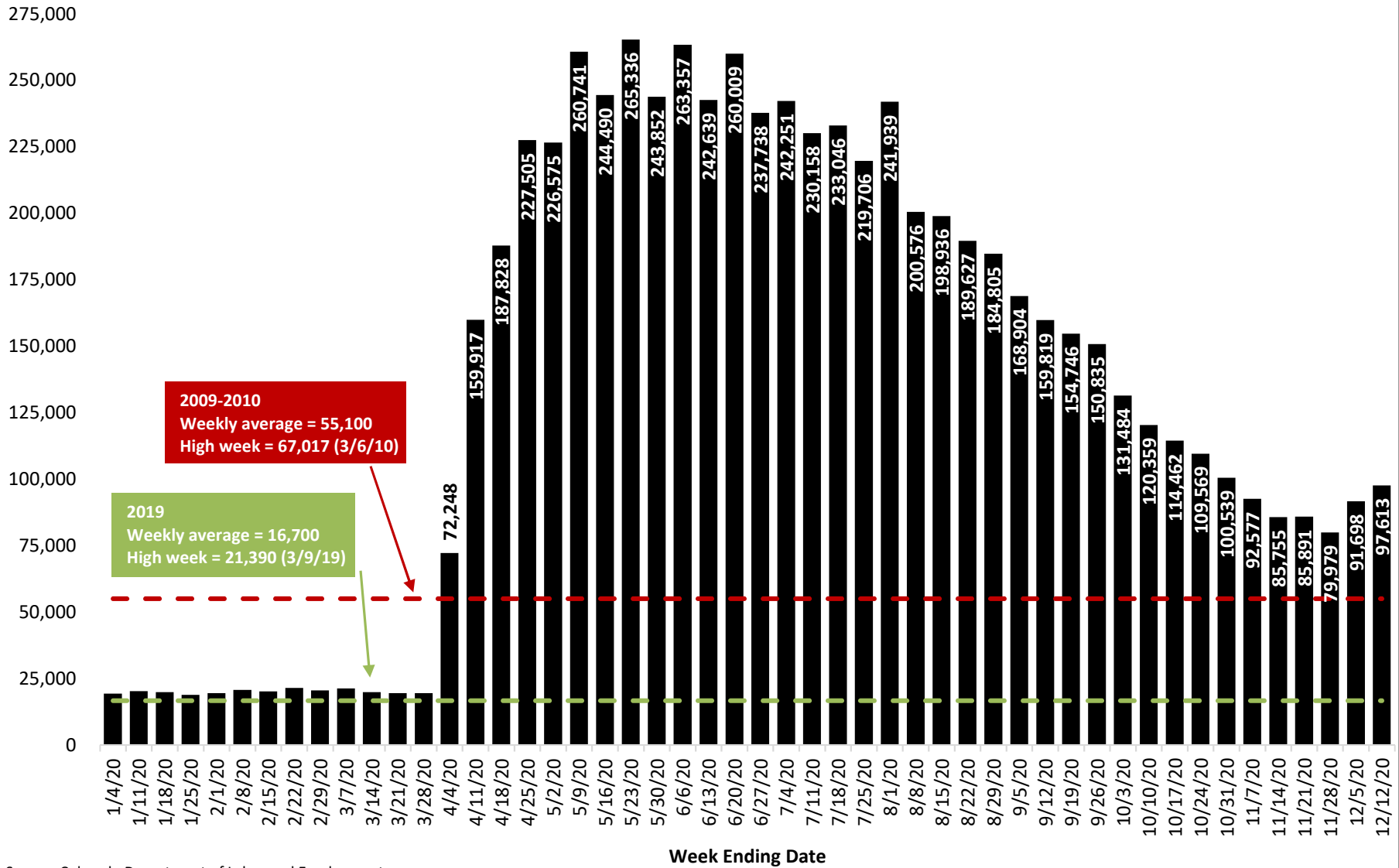


Source: Colorado Department of Labor and Employment; Employment and Training Administration

*Insured unemployment rate (IUR): estimates the share of the State’s UI-covered workforce claiming UI benefits.

**Regular IUR only reflected in this chart, does not include calculation of IUR if claims from extended benefits programs during the Great Recession were incorporated. Also excludes UCFE (federal) and UCX (ex-servicemember) claims.

Colorado Unemployment Insurance Weeks Paid

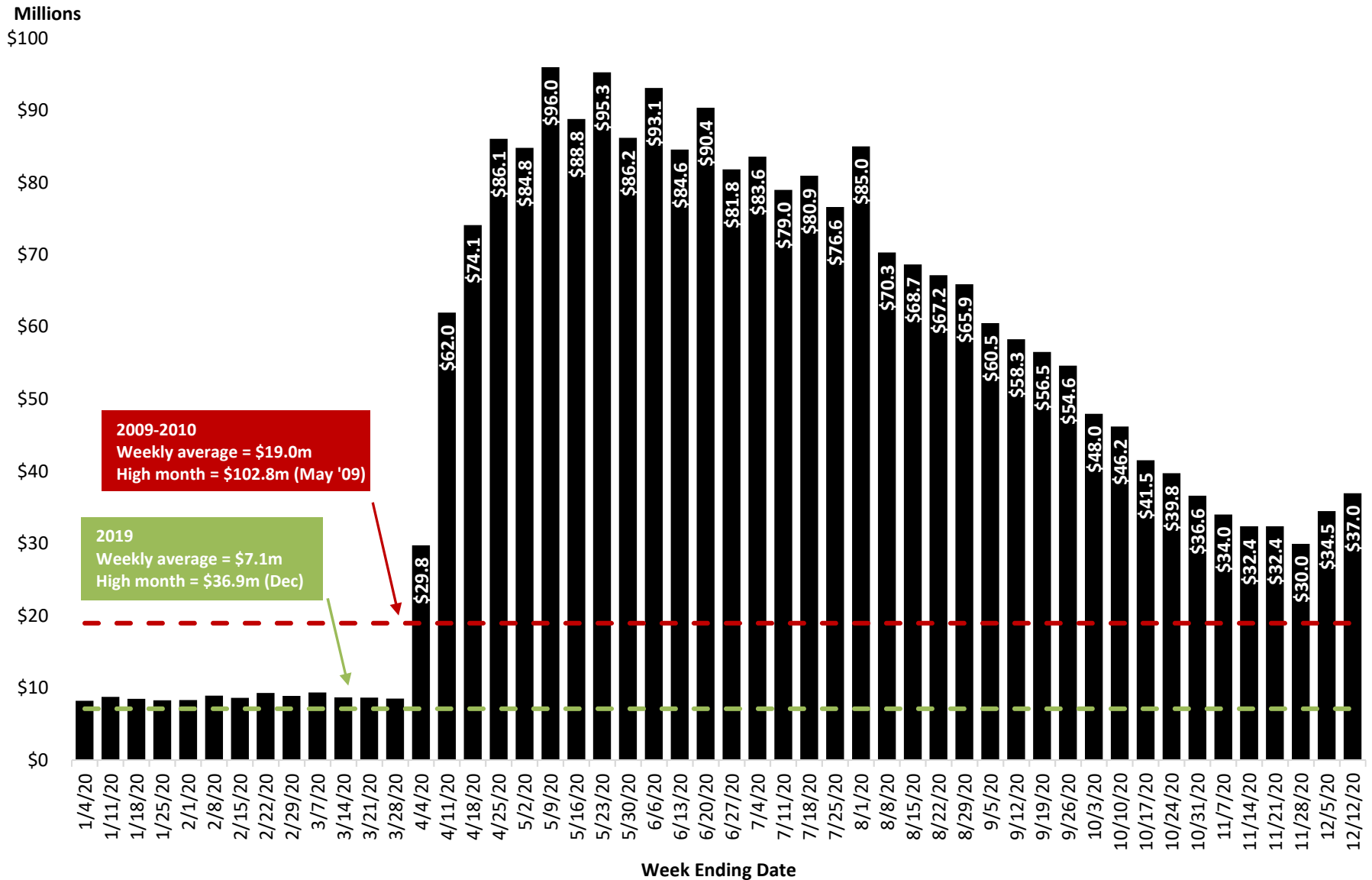


Source: Colorado Department of Labor and Employment

***Weeks paid:** payment made for a week after eligibility has been established. Not all weeks claimed result in a week paid because claimant may not be available to work, may have earnings that exceed the allowed amount, or other reasons.

**Regular UI, UCFE (federal), and UCX (ex-servicemember) weeks paid reflected in this chart. Does not include weeks paid which stemmed from extended benefit programs during the Great Recession.

Colorado Regular Unemployment Insurance Benefit Amounts Paid



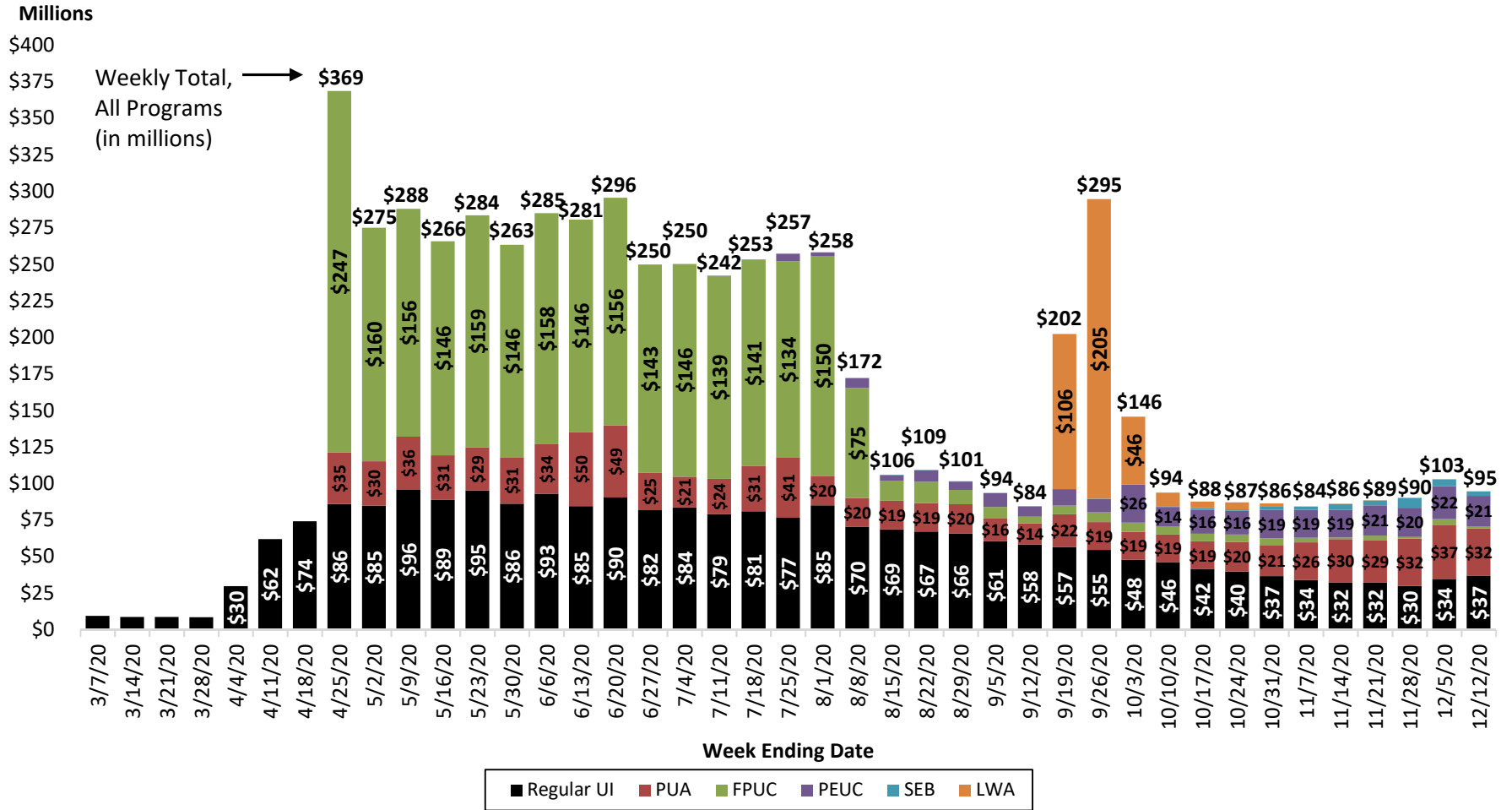
Source: Colorado Department of Labor and Employment

**Regular UI benefit payment amounts only reflected in this chart, does not include benefit payments which stemmed from extended benefit programs during the Great Recession.

Also excludes UCFE (federal) and UCX (ex-servicemember) claims.

Colorado Unemployment Insurance Benefit Amounts Paid

(Regular UI, PUA, FPUC, PEUC, SEB, and LWA)



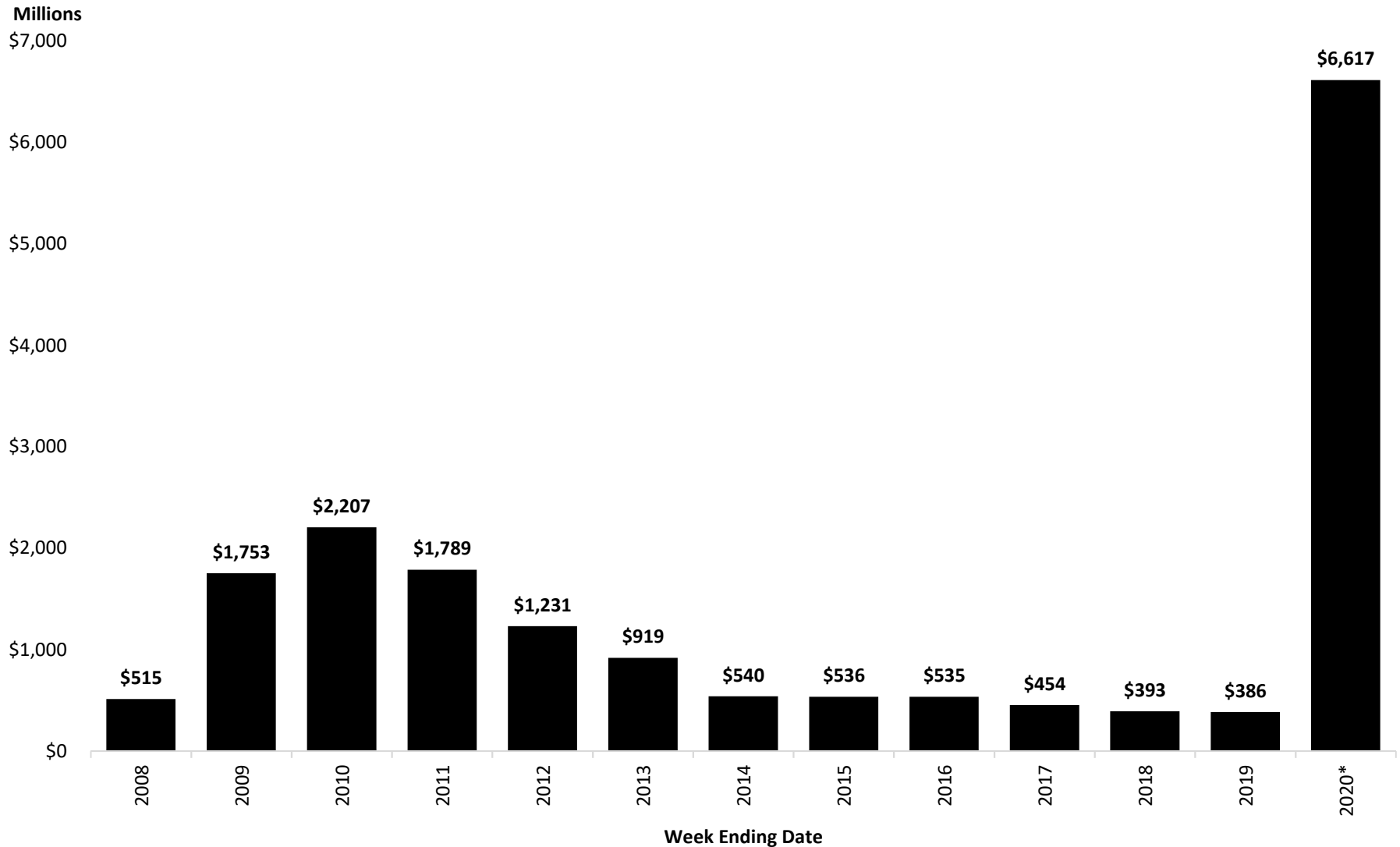
Source: Colorado Department of Labor and Employment

This chart reflects benefits payment amounts for the following programs: **Regular UI (black bar); **Pandemic Unemployment Assistance (PUA)** (red bar), for self-employed, contract and gig workers; **Federal Pandemic Unemployment Compensation (FPUC)** (green bar), which, as part of the CARES Act, provides eligible regular UI and PUA claimants an extra \$600 in federal benefits each week through July 25, 2020; **Pandemic Emergency Unemployment Compensation (PEUC)** (purple bar), which, as part of the CARES Act, extends unemployment benefits by up to 13 weeks; **State Extended Benefits (SEB)** (blue bar), which extends unemployment benefits by an additional 13 weeks; and **Lost Wages Assistance (LWA)** (orange bar), which, as part of a Presidential Executive Order, provides eligible claimants an extra \$300 in weekly federal benefits (available through a FEMA program), retroactive to week ending 8/1/20 to week 9/5/20 (six weeks total).

The PEUC program became active in Colorado in early July. SEB program became active in Colorado mid-August. PUA and FPUC amounts for week ending 4/25/20 include backdated benefits prior to the week of April 25th. Some FPUC payments may be received after July 25th depending on the claimant's payment request schedule; any extension or modification of FPUC will be determined by Congress.

Annual Colorado Unemployment Insurance Benefit Amounts Paid

(Combined Amounts for All Active** UI Programs by Year)

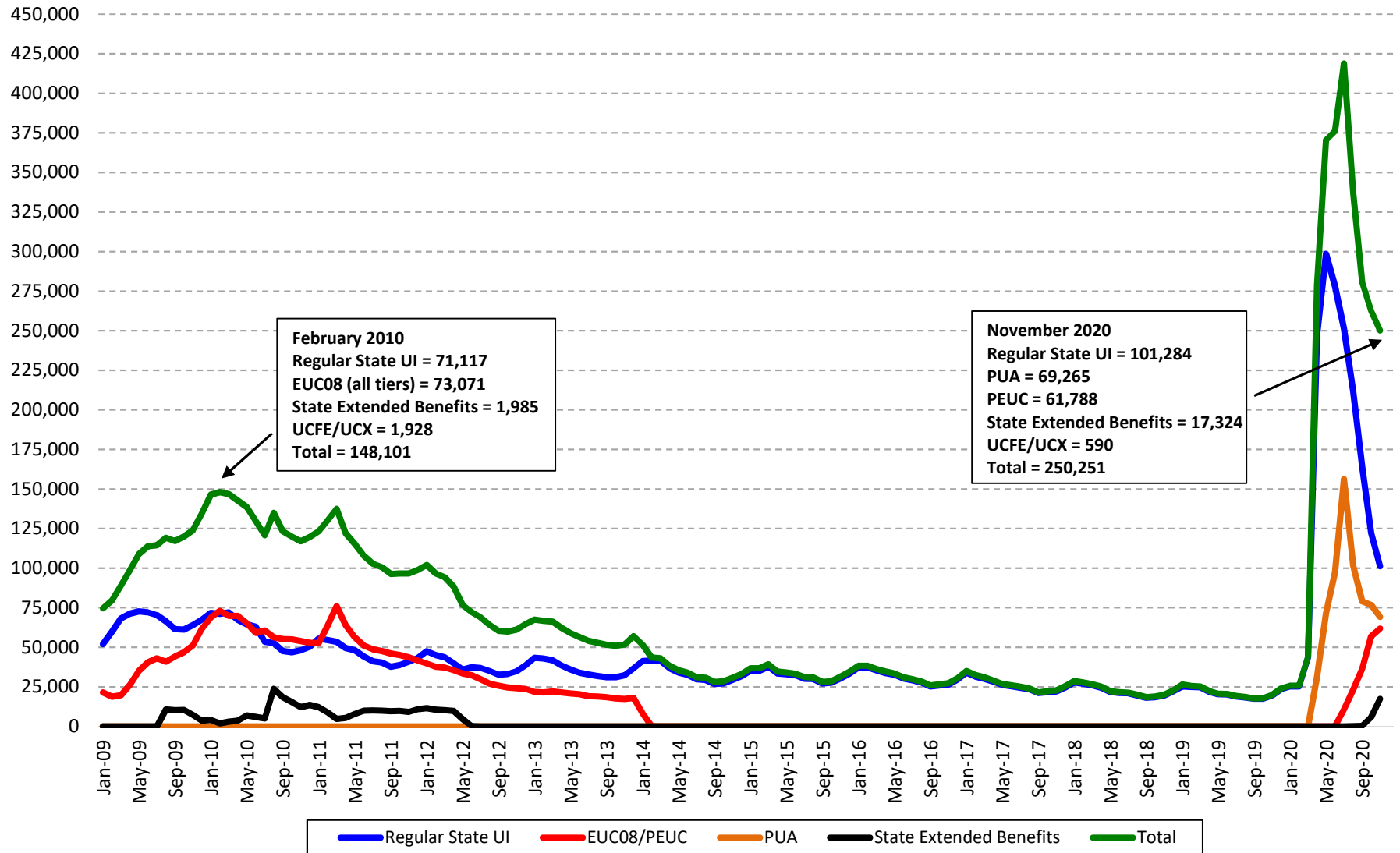


Source: Colorado Department of Labor and Employment

*2020 totals through December 12, 2020.

**Every year includes regular UI, UCFE (federal) and UCX (ex-servicemember) benefit amounts. Additionally, totals from 2008 - 2019 include Emergency Unemployment Compensation (EUC) and State Extended Benefits (SEB), when applicable; while totals from 2020 reflect programs highlighted in the prior chart.

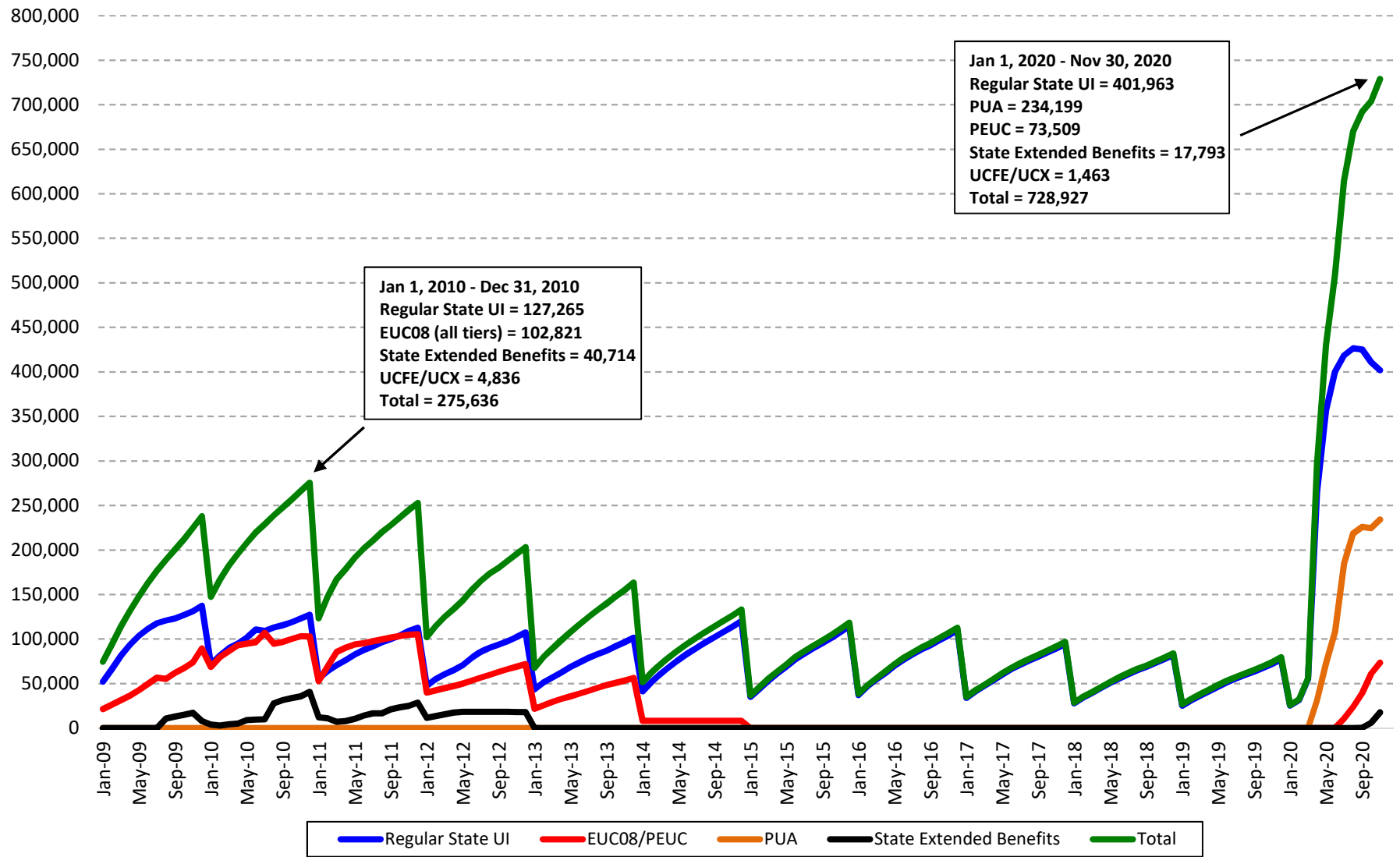
Number of Persons Receiving a UI Payment by Month



Source: Colorado Department of Labor and Employment

***Number of persons receiving UI payment by month and program:** updated once per month, at the beginning of month. Count of UI payment by program type based upon relationship between last payment received and associated program. Data related to new unemployment compensation programs will be incorporated into this report as they become available (PUA added April 2020; PEUC added July 2020; SEB reactivated August 2020).

Number of Persons Receiving a UI Payment (Year-to-Date)



Source: Colorado Department of Labor and Employment

***Number of persons receiving UI payment by YTD and program:** updated once per month, at the beginning of month. Count of UI payment by program type based upon relationship between last payment received and associated program. Data related to new unemployment compensation programs will be incorporated into this report as they become available (PUA added April 2020; PEUC added July 2020; SEB reactivated August 2020).