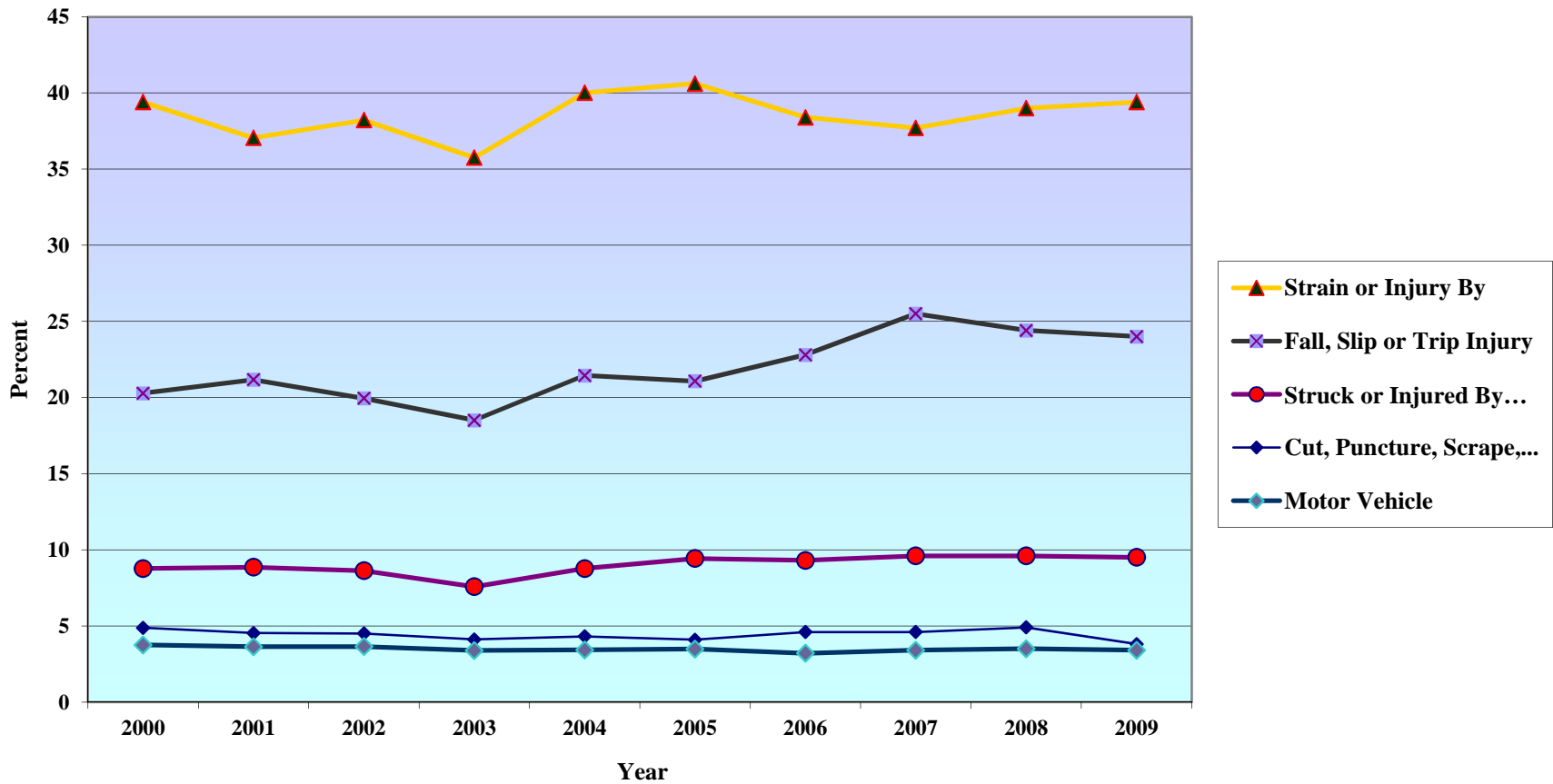


Section IV Cause of Injury

Figure 11. Percent Distribution of Lost-Time Claims, Cause of Injury, Selected Categories: 2000-2009



Notes:

Source: Table 7; and Colorado Department of Labor and Employment, Division of Workers' Compensation, *Work-Related Injuries in Colorado 2003-2008*, Table 7; and Colorado Department of Labor and Employment, Division of Workers' Compensation, *Work-Related Injuries in Colorado 2000-2002*, Table 6.

1 This figure illustrates the five NCCI categories for Cause of Injury with the largest percentages of injuries in 2009, and their percentages over the past 10 years. For data on the other NCCI categories not included here, see Table 7.