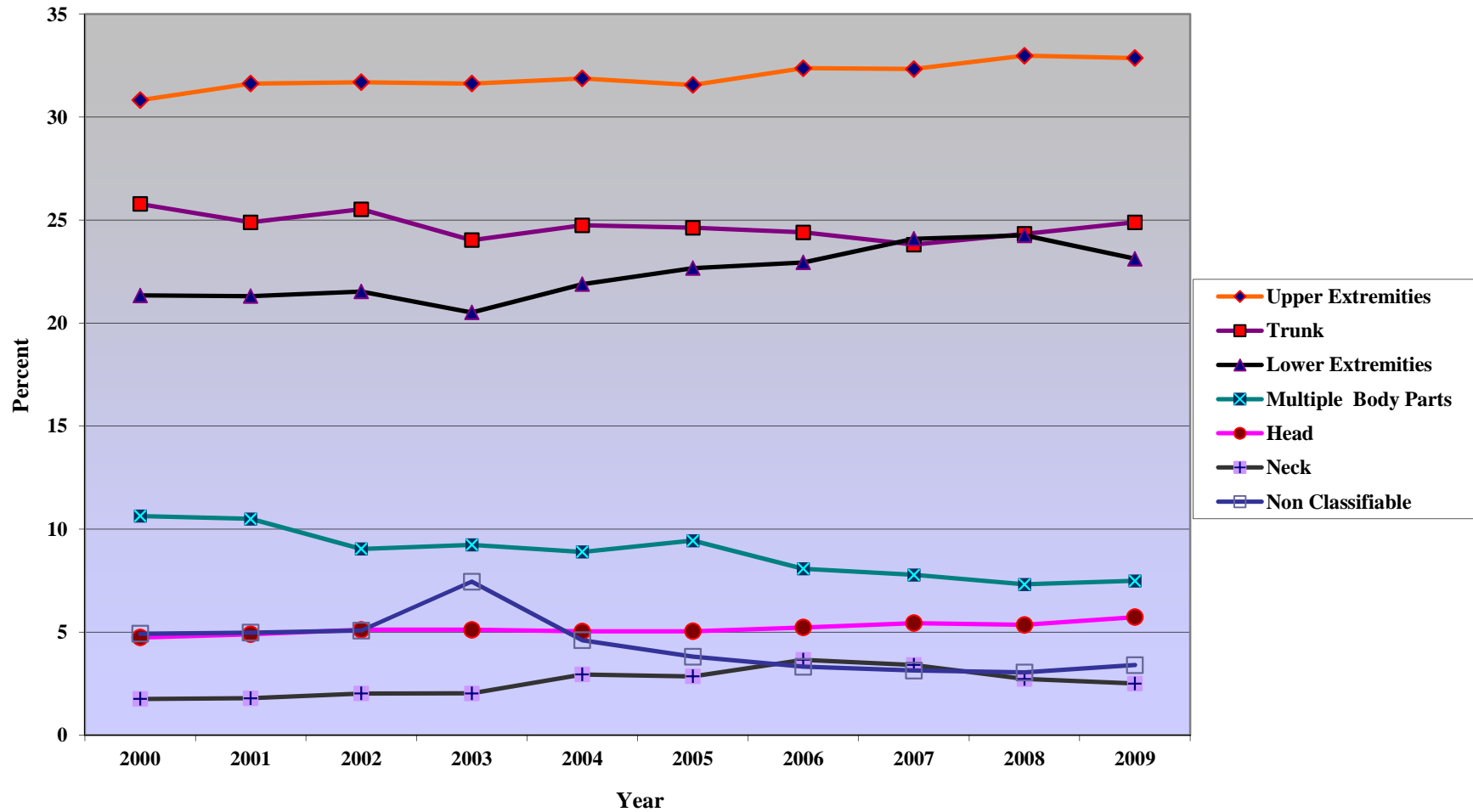


Figure 5. Percent Distribution of Lost-Time Claims, Part of Body: 2000-2009



Source: Table 3; and Colorado Department of Labor and Employment, Division of Workers' Compensation, *Work-Related Injuries in Colorado 2003-2008*, Table 3; and Colorado Department of Labor and Employment, Division of Workers' Compensation, *Work-Related Injuries in Colorado 2000-2002*, Table 2.