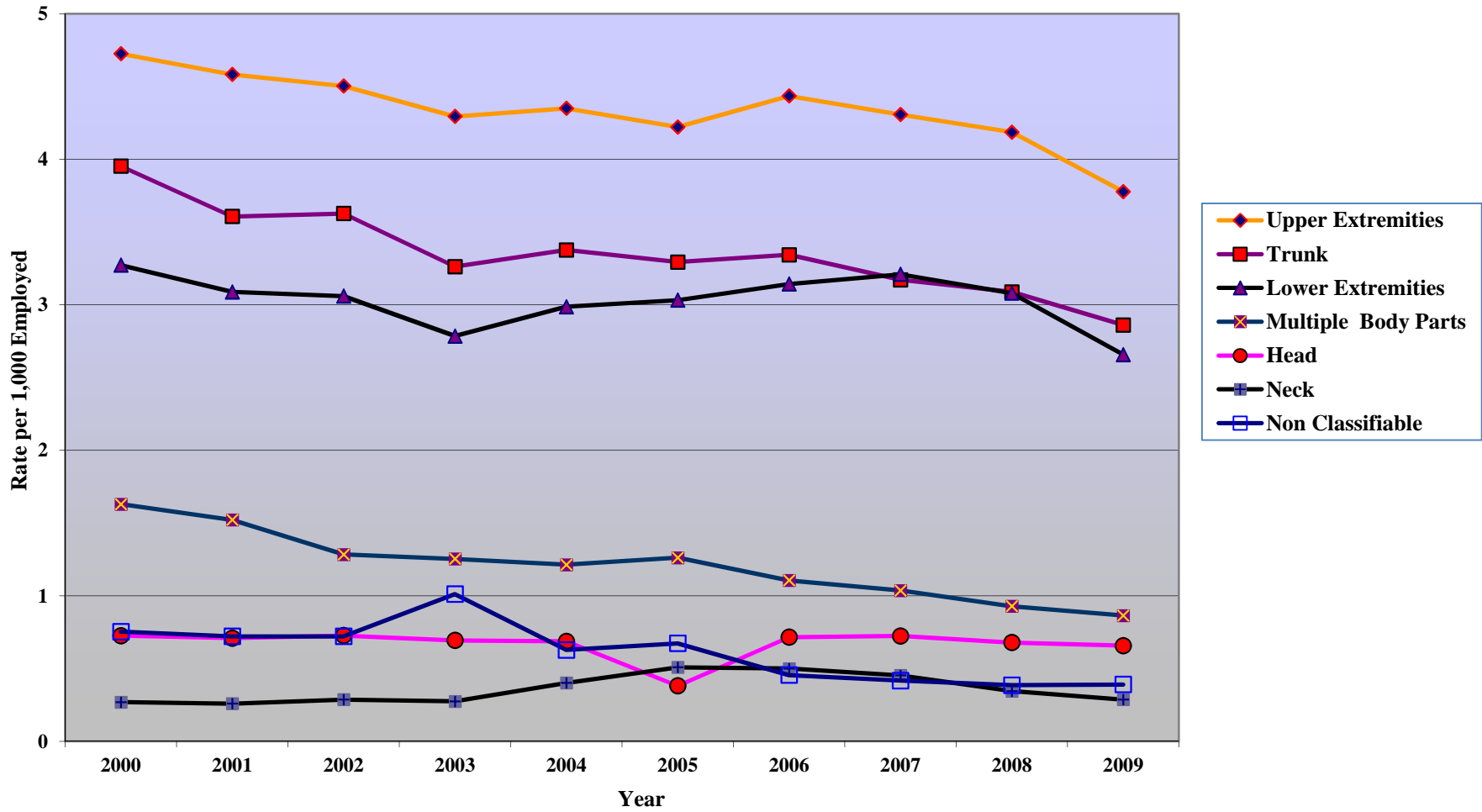


Figure 6. Rate of Lost-Time Claims Filed, Part of Body, per 1,000 Employed: 2000-2009



Source: Table 1 & 3; and Colorado Department of Labor and Employment, Division of Workers' Compensation, *Work-Related Injuries in Colorado 2003-2008*, Table 1 & 3; and Colorado Department of Labor and Employment, Division of Workers' Compensation, *Work-Related Injuries in Colorado 2000-2002*, Table 1 & 2.