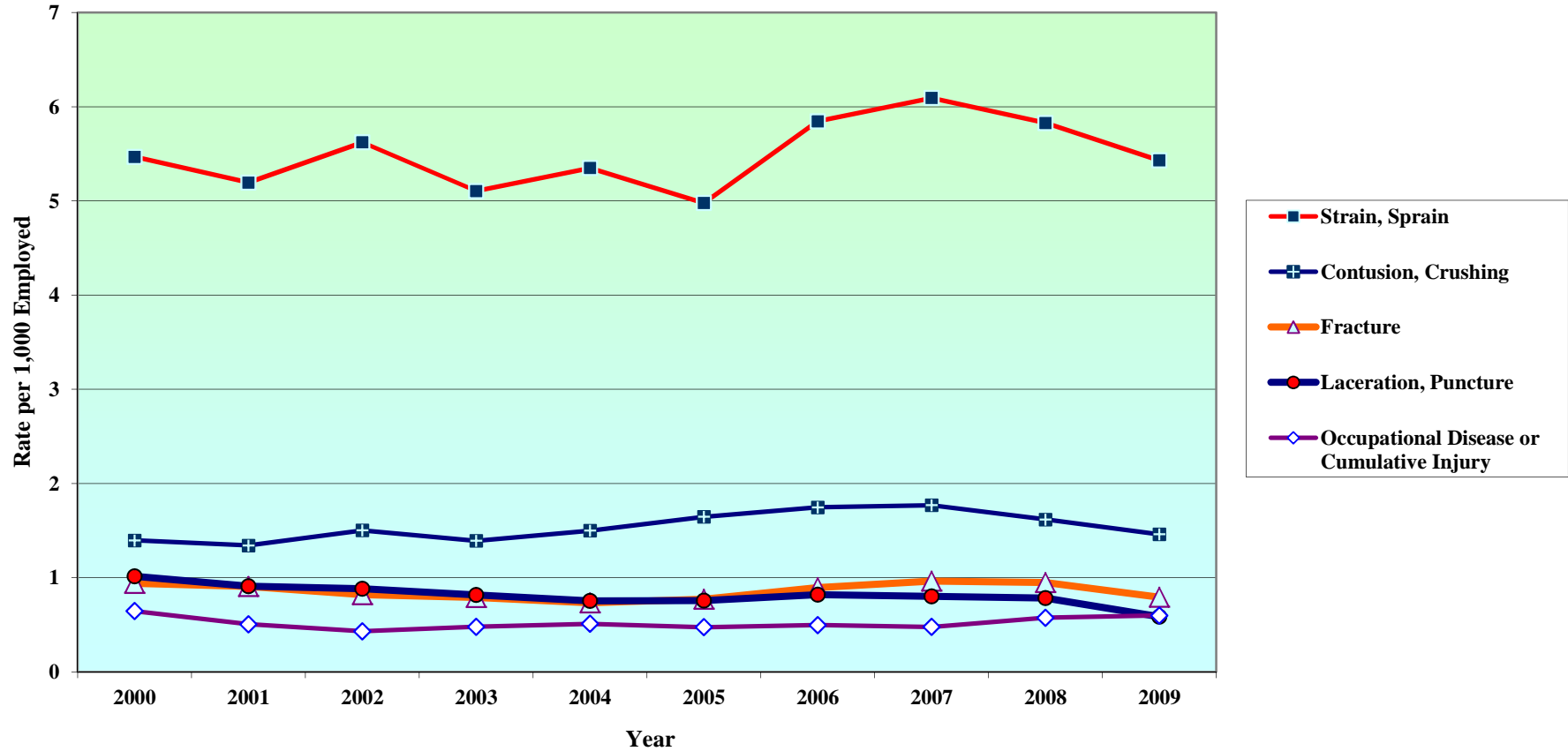


Figure 9. Rate of Lost-Time Claims Filed, Nature of Injury, per 1,000 Employed, Selected Categories: 2000-2009



Notes:

Source: Tables 1 & 5; and Colorado Department of Labor and Employment, Division of Workers' Compensation, *Work-Related Injuries in Colorado 2003-2008*, Tables 1 & 5; and Colorado Department of Labor and Employment, Division of Workers' Compensation, *Work-Related Injuries in Colorado 2000-2002*, Tables 1 & 4.

1 This figure illustrates the five NCCI categories for Nature of Injury with the highest rates for injuries in 2009, and their rates over the past 10 years. For data on the other NCCI categories not included here, see Table 5.