

COLORADO WORKFORCE CONSORTIUM

Rural Resort Overview

May 18, 2016





VAIL OPENS FOR SKIING

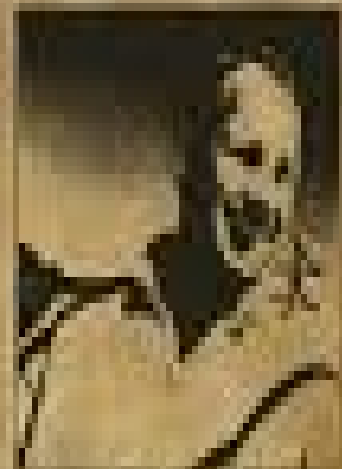


OPTING DAY
DECEMBER 15

1. The first step is to identify the problem.

SEEKING THE SHAPES
TO REAP THE \$1.5B DO

Three days before graduation at Harvard, Massachusetts, he returned to his wife in New York. Within a year, after working in Japan in 1937, Baggott moved up through all the job grades, and after three years became the senior vice president of the American National Bank. Then came war and Pearl Harbor. It is hard to say what Baggott's career would have been up to the air attack on him, he would have at Baggott's Newport and through work up to the lieutenant in April 27, 1945 on the coast line for the Coast Guard. He was the assistant vice president, long after the night of a bomb attack on the ship of the American and coast guard. He was then the vice



THE UNIVERSITY OF CHICAGO PRESS

**OPENING DAY LEFT
TICKET PRICE \$100**





[illegible]



MACGYVER

A close-up photograph of a baby with light brown hair and blue eyes, looking directly at the camera with a determined, slightly pouting expression. The baby is wearing a green and white long-sleeved shirt and is holding a small amount of sand in their right hand. The background is a blurred, sandy beach under a clear sky.

TOGETHER

WE CAN DO IT!

A stack of several sticky notes in various colors (yellow, pink, white, and a prominent lime green) is arranged on a light brown, textured surface. The topmost note is lime green and features the text "MAKE THINGS HAPPEN!" written in a bold, black, hand-drawn font. The notes are slightly overlapping and have irregular, torn edges.

MAKE
THINGS
HAPPEN!

UNEMPLOYMENT RATE & LABOR FORCE

The unemployment rate in all counties but Jackson for the most recent month reported (December 2015) was lower than the reported rate the same month one year ago. The regional average is lower than both the State and U.S. rate. As of December 2015, the region's total labor force is reported at 79,432. This is a 5% increase over the total labor force reported one year ago.

| | Eagle | Grand | Jackson | Pitkin | Summit | Region Avg. | Colorado | US |
|--------|-------|-------|---------|--------|--------|-------------|----------|-----|
| Dec-15 | 2.5 | 2.5 | 3 | 2.9 | 1.6 | 2.5 | 3.5 | 5.0 |
| Dec-14 | 3.3 | 3.0 | 1.6 | 3.3 | 2.4 | 2.7 | 4.0 | 5.6 |

| Labor Force: Dec. 2015 vs. Dec. 2014 | | | |
|--------------------------------------|--------|--------|-------|
| | Dec-15 | Dec-14 | % Chg |
| Eagle | 34,634 | 32,610 | 6% |
| Grand | 9,737 | 9,608 | 1% |
| Jackson | 799 | 1,393 | -43% |
| Pitkin | 11,020 | 12,226 | -10% |
| Summit | 23,242 | 20,076 | 16% |
| Total | 79,432 | 75,913 | 5% |

JOBS & ESTABLISHMENTS

The total number of jobs, in all industries, increased by 1,739 jobs, or 2.4%, from Q3 2014 to Q3 2015. This compares with a 3% increase in jobs in the state as a whole, which reported an increase in 74,157 jobs. There was an increase of 266 establishments over the year, which is a 3.3% increase.

| AVERAGE EMPLOYMENT | | | | | # of ESTABLISHMENTS | | | |
|--------------------|---------------|---------------|--------------|-------------|---------------------|--------------|------------|-------------|
| | Q3 2015 | Q3 2014 | #Chg | %Chg | Q3 2015 | Q3 2014 | #Chg | %Chg |
| EAGLE | 30,476 | 29,328 | 1,148 | 3.9% | 3,394 | 3,246 | 148 | 4.6% |
| GRAND | 7,534 | 7,154 | 380 | 5.3% | 849 | 825 | 24 | 2.9% |
| JACKSON | 580 | 607 | (27) | -4.4% | 89 | 92 | -3 | -3.3% |
| PITKIN | 15,642 | 16,408 | (766) | -4.7% | 1,793 | 1,752 | 41 | 2.3% |
| SUMMIT | 19,256 | 18,252 | 1,004 | 5.5% | 2,208 | 2,152 | 56 | 2.6% |
| TOTAL | 73,488 | 71,749 | 1,739 | 2.4% | 8,333 | 8,067 | 266 | 3.3% |

TAXABLE SALES

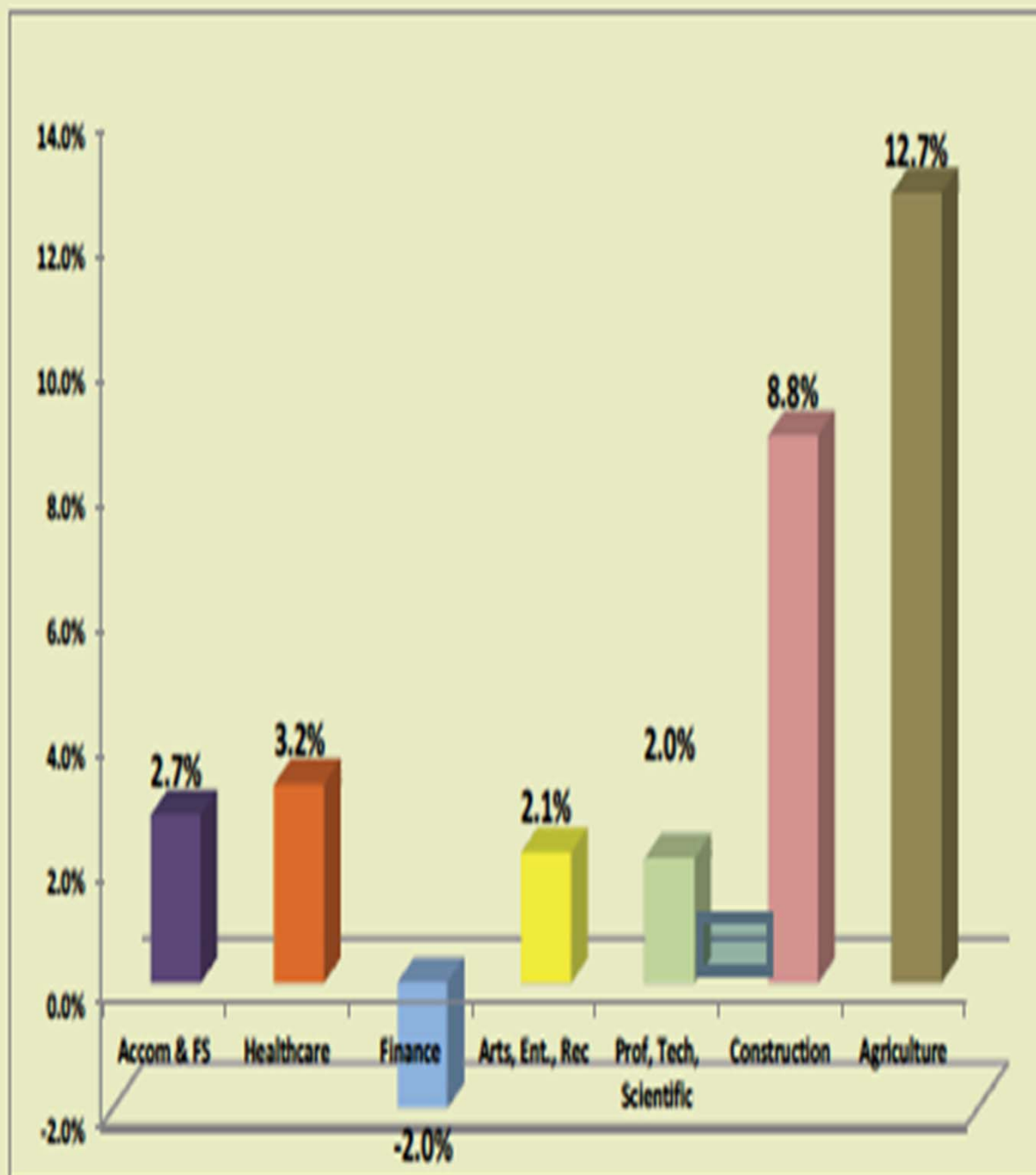
Retail sales is an economic indicator of consumer spending patterns. In addition, sales tax is an important source of revenue to state and local governments. In comparing the most recent data available (May 2015), taxable sales were up 11% in the region overall when comparing to the previous year. Three out of five counties reported double-digit increases.

| Taxable Sales (in thousands) | | | |
|------------------------------|------------|------------|-------|
| | May-15 | May-14 | % Chg |
| Eagle | \$ 122,824 | \$ 116,001 | 6% |
| Grand | \$ 29,950 | \$ 25,375 | 18% |
| Jackson | \$ 2,114 | \$ 2,495 | -15% |
| Pitkin | \$ 53,906 | \$ 45,686 | 18% |
| Summit | \$ 92,734 | \$ 81,698 | 14% |
| Total | \$ 301,528 | \$ 271,255 | 11% |

Regional Job Growth in Key Industries:

Q3 2015 vs. Q3 2014

There was job growth in all key sectors in the region except Finance & Insurance, which showed a decline of 2.0%. The most significant job growth was seen in the construction industry (+8.8 %) and Agriculture, Forestry and Fishing industry (+12.7%).

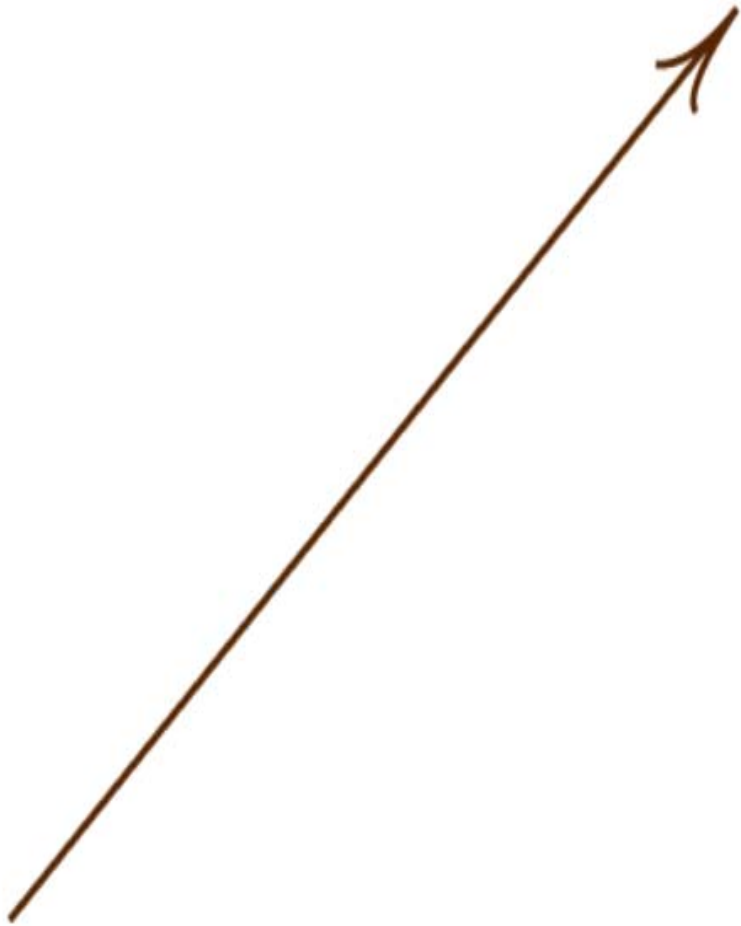


ANNUAL EARNINGS BY KEY INDUSTRY (Covered Employment) - Q3 2015

Annual earnings for all industries, when averaging all counties, is \$38,979 for the 3rd quarter of 2015. This is significantly lower than annual earnings reported by the State of Colorado for the same time period (reported at \$52,260). The highest paying jobs are in the Finance & Insurance, Professional/Scientific/Technical, Construction, and Healthcare industries.

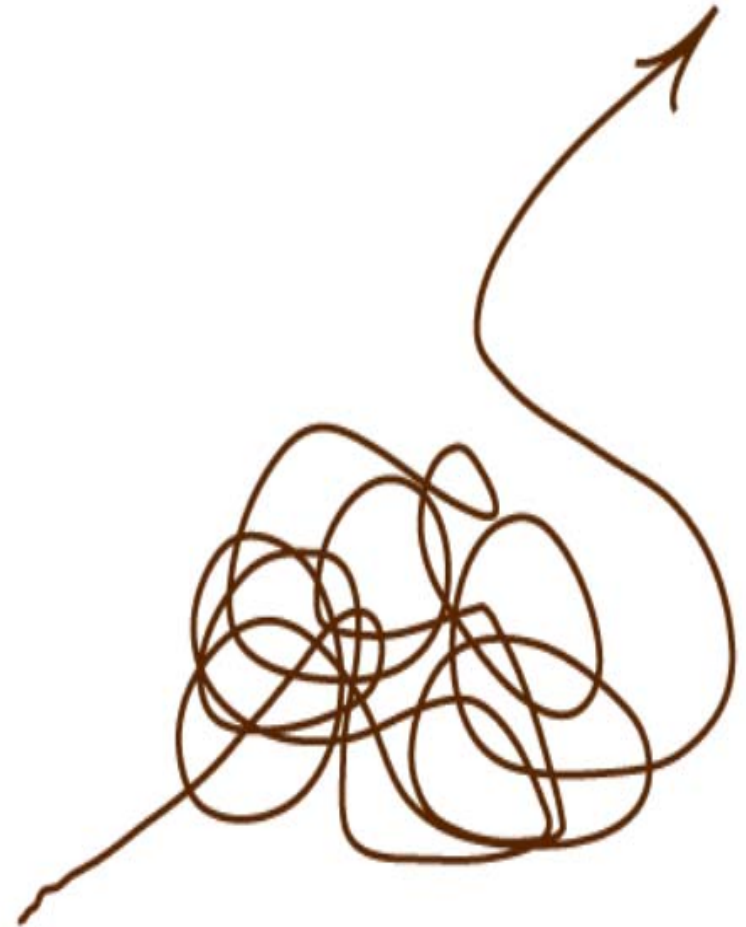
| | All Industries | Accom. & Food Services | Healthcare & Social Asst. | Finance & Insurance | Arts, Ent., Recreation | Prof., Scien. Tech. Svcs | Constret. | Ag. Forestry, Fishing, Hunting |
|---------|----------------|------------------------|---------------------------|---------------------|------------------------|--------------------------|-----------|--------------------------------|
| EAGLE | \$42,224 | \$31,408 | \$60,632 | \$72,228 | \$35,828 | \$60,164 | \$53,040 | \$43,524 |
| GRAND | \$33,748 | \$21,788 | \$43,368 | \$46,228 | \$29,796 | \$48,360 | \$47,580 | \$33,592 |
| JACKSON | \$30,836 | \$17,472 | \$12,584 | \$59,852 | \$12,688 | \$54,028 | \$33,904 | \$30,108 |
| PITKIN | \$50,492 | \$37,180 | \$69,784 | \$110,812 | \$51,480 | \$80,548 | \$66,456 | \$41,184 |
| SUMMIT | \$37,596 | \$29,172 | \$47,112 | \$75,556 | \$29,640 | \$64,428 | \$50,180 | \$24,648 |
| AVERAGE | \$38,979 | \$27,404 | \$55,224 | \$76,206 | \$26,988 | \$61,506 | \$50,232 | \$34,611 |

SUCCESS



What people think it looks like.

SUCCESS



What it really looks like.



We're all in this together.